

LEA Name : North Schuylkill SD  
Address : 15 Academy Lane  
Ashland , PA 17921

County : Schuylkill  
AUN Number : 129545003  
LEA Type : SD

**Annual Financial Report**  
**Accuracy Certification Statement**  
For Fiscal Year Ending  
**6/30/2024**

Pennsylvania Department of Education  
&

Office of Comptroller Operations

PDE-2056: Intermediate Unit

PDE-2057: School District, AVTS/CTC, Charter School,  
and Special Program Jointure

**CERTIFICATION: By signing this page I agree that the electronic data submitted is a complete and accurate statement of the financial operations and status of the local education agency for the fiscal year. It has been prepared in accordance with generally accepted accounting principles and established Commonwealth of PA reporting guidelines.**



Chief School Administrator Signature



Board Secretary Signature

10/21/2024

Date

10/21/2024

Date

Robert Amos

(570)874-8912

Ext :

Contact Person

Contact Person Telephone Number

ramos@northschuylkill.net

Contact Person E-mail Address

Contact Person Fax Number

# Audit Certification

## Annual Financial Report:

For Fiscal Year Ending 6/30/2024

(Pursuant to PA School Code Section 218(b))

LEA Name : North Schuylkill SD

AUN Number : 129545003

County : Schuylkill

Audit Certification Due:  
12/31/2024

This certification is applicable to the Annual Financial Report data submitted through the Consolidated Financial Reporting System (CFRS).

CERTIFICATION: By signing this page I agree that the financial statements of the school have been properly audited as noted above pursuant to Article XXIV, and in the auditor's professional opinion, the Annual Financial Report (PDE-2057) submitted through CFRS is materially consistent with the audited financial statements.

Chief School Administrator

Robert J. Achell  
Signature

12/12/2024  
Date

Board Secretary

Stephany Craig  
Signature

12/12/2024  
Date

Robert Amos

Contact Person

ramos@northschuylkill.net

Contact Person E-mail Address

(570)874-8912

Contact Person Telephone Number

Ext :

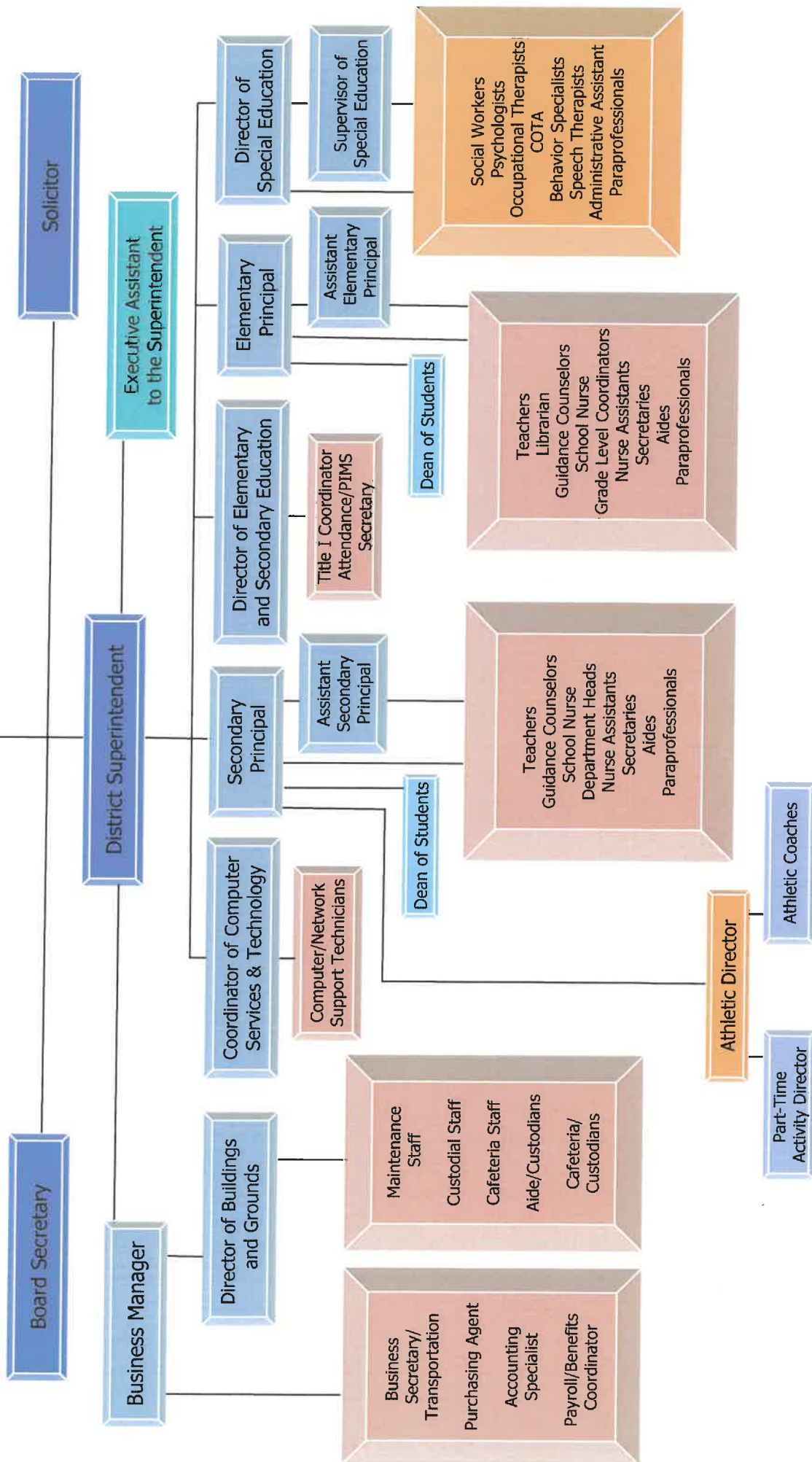
Contact Person Fax Number

# NORTH SCHUYLKILL SCHOOL DISTRICT

## Organizational Chart

Approved by the  
Board of Education  
August 14, 2024

Board of School Directors



## NORTH SCHUYLKILL SCHOOL DISTRICT



Book	Policy Manual
Section	600 Finances
Title	GASB Statement 34
Code	622
Status	Active
Legal	<a href="#">1. 24 P.S. 218</a> <a href="#">2. 24 P.S. 613</a> Governmental Accounting Standards Board, Statement No. 34
Adopted	June 29, 2011
Last Reviewed	June 21, 2023

### **Purpose**

The Board recognizes the need to implement the required accounting and financial reporting standards stipulated by the Pennsylvania Department of Education.

The primary objectives of implementing the GASB Statement 34 are to assure compliance with state requirements, and properly account for both the financial and economic resources of the district.

### **Authority**

Participation of the school district in any such activity shall be in accordance with Board policy.[\[1\]](#)  
[\[2\]](#)

### **Delegation of Responsibility**

The responsibility to coordinate the compilation and preparation of all information necessary to implement this policy is delegated to the Business Manager.

The designated individual shall be responsible for implementing the necessary procedures to establish and maintain a fixed asset inventory, including depreciation schedules. Depreciation shall be computed on a straight-line basis over the useful lives of the assets, using an averaging convention. Normal maintenance and repairs shall be charged to expense as incurred; major renewals and betterments that materially extend the life or increase the value of the asset shall be capitalized. A schedule of accumulated depreciation shall be consistent from year to year. The basis for depreciation, including groups of assets and useful lives, shall be in writing and submitted for review to the Board.

The Business Manager shall prepare the required Management Discussion and Analysis (MD&A). The MD&A shall be in the form required by GASB Statement 34 and shall be submitted to the Board for approval, prior to publication.

Prior to submission of the MD&A for Board approval, the district's independent auditors shall review the MD&A, in accordance with SAS No. 52, "Required Supplementary Information".

### **Guidelines**

In order to associate debt with acquired assets and to avoid net asset deficits, any asset that has been acquired with debt proceeds shall be capitalized, regardless of the cost of the asset. The asset life of these assets shall be considered relative to the time of the respective debt amortizations.

For all other assets not acquired by debt proceeds, the dollar value of any single item for inclusion in the fixed assets accounts shall be not less than \$4,000.

The capitalization threshold shall be set at a level that will capture at least eighty percent (80%) of all fixed assets.

The assets listed below do not normally individually meet capitalization threshold criteria:

1. Library books.
2. Classroom texts.
3. Computer equipment.
4. Classroom furniture.

These asset category costs shall be capitalized and depreciated as groups when that group's acquisition cost exceeds the capitalization threshold in any given fiscal year.

For group asset depreciation purposes, the estimated useful life of the group may be based on the weighted average or simple average of the useful life of individual items, or on an assessment of the life of the group as a whole. Periodically, the district shall review the estimated life of groups of assets and adjust the remaining depreciation life of the group.

Assets that fall below the capitalization threshold for GASB 34 reporting purposes may still be significant for insurance, warranty service, and obsolescence/replacement policy tracking purposes. The district may record and maintain these non-GASB 34 asset inventories in subsidiary ledgers.

<u>Val Number</u>	<u>Description</u>	<u>Justification</u>
30116	Revenue Detail: A large amount has been reported as Earnings on Investments in Fund 32, account 6500, which should only include interest and/or dividend earnings. Correct or provide a brief explanation of the revenue reported.  Revenue Detail 6500, Fund 32: \$125,138.00	Interest rates have been high, which generated a large amount of interest earnings.

LEA : 129545003     North Schuylkill SD

Printed 3/6/2025 1:31:36 PM

Amounts Expressed in Whole Dollars		<u>General Fund</u> <u>(10)</u>	<u>Student Sponsored</u> <u>Activity Fund</u> <u>(21)</u>	<u>Public Purpose Trust</u> <u>(27)</u>	<u>Other Compt Approved</u> <u>(28)</u>	<u>Athletic / Activity</u> <u>(29)</u>
<b>Assets And Deferred Outflows Of Resources</b>						
<b>Assets</b>						
0100	Cash and Cash Equivalents	8,374,159				
0110	Investments					
0120	Taxes Receivable	2,723,077				
0130	Due From Other Funds	1,678				
0141	Due From Other Governments					
0142	State Revenue Receivable	1,850,183				
0143	Federal Revenue Receivable	679,733				
0145	Other Intergovernmental Revenue Receivable	182,625				
0146	Due from Primary Government					
0147	Due from Component Unit					
0150	Other Receivables	14,270				
0170	Inventories					
0180	Prepaid Expenses (Expenditures)	73,396				
0190	Other Current Assets					
<b>Total Assets</b>		<b>\$13,899,121</b>				
0910	Deferred Outflows of Resources					
<b>Total Assets And Deferred Outflows Of Resources</b>		<b>\$13,899,121</b>				

LEA : 129545003     North Schuylkill SD

Printed 3/6/2025 1:31:36 PM

Amounts Expressed in Whole Dollars		<u>Capital Reserve (690.</u> <u>1850)</u> <u>(31)</u>	<u>Capital Reserve (1431)</u> <u>(32)</u>	<u>Other Capital Projects</u> <u>Fund</u> <u>(39)</u>	<u>Debt Service</u> <u>(40)</u>	<u>Permanent</u> <u>(90)</u>
<b>Assets And Deferred Outflows Of Resources</b>						
<b>Assets</b>						
0100	Cash and Cash Equivalents		2,596,267			
0110	Investments					
0120	Taxes Receivable					
0130	Due From Other Funds					
0141	Due From Other Governments					
0142	State Revenue Receivable					
0143	Federal Revenue Receivable					
0145	Other Intergovernmental Revenue Receivable					
0146	Due from Primary Government					
0147	Due from Component Unit					
0150	Other Receivables					
0170	Inventories					
0180	Prepaid Expenses (Expenditures)					
0190	Other Current Assets					
<b>Total Assets</b>			<b>\$2,596,267</b>			
0910	Deferred Outflows of Resources					
<b>Total Assets And Deferred Outflows Of Resources</b>			<b>\$2,596,267</b>			



LEA : 129545003     North Schuylkill SD

Printed 3/6/2025 1:31:36 PM

Amounts Expressed in Whole Dollars		<u>Total Governmental</u> <u>Funds</u>
<b>Assets And Deferred Outflows Of Resources</b>		
<b>Assets</b>		
0100 Cash and Cash Equivalents		10,970,426
0110 Investments		
0120 Taxes Receivable		2,723,077
0130 Due From Other Funds		1,678
0141 Due From Other Governments		
0142 State Revenue Receivable		1,850,183
0143 Federal Revenue Receivable		679,733
0145 Other Intergovernmental Revenue Receivable		182,625
0146 Due from Primary Government		
0147 Due from Component Unit		
0150 Other Receivables		14,270
0170 Inventories		
0180 Prepaid Expenses (Expenditures)		73,396
0190 Other Current Assets		
<b>Total Assets</b>		<b>\$16,495,388</b>
0910 Deferred Outflows of Resources		
<b>Total Assets And Deferred Outflows Of Resources</b>		<b>\$16,495,388</b>

LEA : 129545003     North Schuylkill SD

Printed 3/6/2025 1:31:36 PM

Amounts Expressed in Whole Dollars	<u>General Fund</u> <u>(10)</u>	<u>Student Sponsored</u> <u>Activity Fund</u> <u>(21)</u>	<u>Public Purpose Trust</u> <u>(27)</u>	<u>Other Compt Approved</u> <u>(28)</u>	<u>Athletic / Activity</u> <u>(29)</u>
<b>Liabilities And Deferred Inflows Of Resources And Fund Balances</b>					
<b>Liabilities</b>					
0400 Due to Other Funds					
0411 Due to Other Governments					
0412 Due to Primary Government					
0413 Due to Component Unit					
0420 Accounts Payable	270,158				
0430 Contracts Payable					
0440 Current Portion of Long-Term Debt					
0450 Short-Term Payables					
0461 Accrued Salaries and Benefits	2,828,213				
0462 Payroll Deductions and Withholding	32,874				
0480 Unearned Revenues	2,156,119				
0490 Other Current Liabilities					
<b>Total Liabilities</b>	<b>\$5,287,364</b>				
0950 Deferred Inflows of Resources					
<b>Fund Balances</b>					
0810 Nonspendable Fund Balance					
0820 Restricted Fund Balance	633,452				
0830 Committed Fund Balance					
0840 Assigned Fund Balance	450,000				
0850 Unassigned Fund Balance	7,528,305				
<b>Total Fund Balances</b>	<b>\$8,611,757</b>				
<b>Total Liabilities, Deferred Inflows Of Resources And Fund Balances</b>	<b>\$13,899,121</b>				

LEA : 129545003     North Schuylkill SD

Printed 3/6/2025 1:31:36 PM

Amounts Expressed in Whole Dollars		<u>Capital Reserve (690.</u> <u>1850)</u> <u>(31)</u>	<u>Capital Reserve (1431)</u> <u>(32)</u>	<u>Other Capital Projects</u> <u>Fund</u> <u>(39)</u>	<u>Debt Service</u> <u>(40)</u>	<u>Permanent</u> <u>(90)</u>
<b>Liabilities And Deferred Inflows Of Resources And Fund Balances</b>						
<b>Liabilities</b>						
0400	Due to Other Funds					
0411	Due to Other Governments					
0412	Due to Primary Government					
0413	Due to Component Unit					
0420	Accounts Payable					
0430	Contracts Payable					
0440	Current Portion of Long-Term Debt					
0450	Short-Term Payables					
0461	Accrued Salaries and Benefits					
0462	Payroll Deductions and Withholding					
0480	Unearned Revenues					
0490	Other Current Liabilities					
<b>Total Liabilities</b>						
0950	Deferred Inflows of Resources					
<b>Fund Balances</b>						
0810	Nonspendable Fund Balance					
0820	Restricted Fund Balance			2,596,267		
0830	Committed Fund Balance					
0840	Assigned Fund Balance					
0850	Unassigned Fund Balance					
<b>Total Fund Balances</b>				<b>\$2,596,267</b>		
<b>Total Liabilities, Deferred Inflows Of Resources And Fund Balances</b>				<b>\$2,596,267</b>		

LEA : 129545003     North Schuylkill SD

Printed 3/6/2025 1:31:36 PM

Amounts Expressed in Whole Dollars		<u>Total Governmental</u> <u>Funds</u>
<b>Liabilities And Deferred Inflows Of Resources And Fund Balances</b>		
<b>Liabilities</b>		
0400 Due to Other Funds		
0411 Due to Other Governments		
0412 Due to Primary Government		
0413 Due to Component Unit		
0420 Accounts Payable	270,158	
0430 Contracts Payable		
0440 Current Portion of Long-Term Debt		
0450 Short-Term Payables		
0461 Accrued Salaries and Benefits	2,828,213	
0462 Payroll Deductions and Withholding	32,874	
0480 Unearned Revenues	2,156,119	
0490 Other Current Liabilities		
<b>Total Liabilities</b>	<b>\$5,287,364</b>	
0950 Deferred Inflows of Resources		
<b>Fund Balances</b>		
0810 Nonspendable Fund Balance		
0820 Restricted Fund Balance	3,229,719	
0830 Committed Fund Balance		
0840 Assigned Fund Balance	450,000	
0850 Unassigned Fund Balance	7,528,305	
<b>Total Fund Balances</b>	<b>\$11,208,024</b>	
<b>Total Liabilities, Deferred Inflows Of Resources And Fund Balances</b>	<b>\$16,495,388</b>	

LEA : 129545003     North Schuylkill SD

Printed 3/6/2025 1:31:44 PM

Amounts Expressed in Whole Dollars	<u>General Fund</u> <u>(10)</u>	<u>Student Sponsored</u> <u>Activity Fund</u> <u>(21)</u>	<u>Public Purpose Trust</u> <u>(27)</u>	<u>Other Compt Approved</u> <u>(28)</u>	<u>Athletic / Activity</u> <u>(29)</u>
<b>Revenues</b>					
6000 Revenue from Local Sources	14,864,631				
7000 Revenue from State Sources	20,964,155				
8000 Revenue from Federal Sources	2,094,745				
<b>Total Revenues</b>	<b>\$37,923,531</b>				
<b>Expenditures</b>					
1000 Instruction	21,312,506				
2000 Support Services	11,385,988				
3000 Operation of Non-Instructional Services	916,889				
4000 Facilities Acquisition, Construction and Improvement Services	2,586				
5110 Debt Service	2,101,582				
5130 Refund of Prior Year Revenues / Receipts					
5140 Leases and Other Right-to-Use Arrangements					
<b>Total Expenditures</b>	<b>\$35,719,551</b>				
<b>Excess (Deficiency) Of Revenues Over Expenditures</b>	<b>\$2,203,980</b>				
<b>Other Financing Sources (Uses)</b>					
9110 Face Value of Bonds Issued					
9120 Proceeds from Refunding of Bonds					
9130 Bond Premiums					
9200 Proceeds from Extended Term Financing, Leases, and Other Right-to-Use Arrangements					
9300 Interfund Transfers - IN					
9400 Sale of or Compensation for Loss of Fixed Assets					
9710 Transfers from Component Units					
9720 Transfers from Primary Governments					
9910 Other Financing Sources Not Listed in the 9000 Series					
9990 Insurance Recoveries					
5120 Debt Service – Refunded Bonds					
5150 Bond Discounts					
5200 Interfund Transfers – Out	1,125,075				
5300 Transfers Out to Component Units/Primary Governments					
<b>Total Other Financing Sources (Uses)</b>	<b>(\$1,125,075)</b>				

Amounts Expressed in Whole Dollars		<u>Capital Reserve (690.</u> <u>1850)</u> <u>(31)</u>	<u>Capital Reserve (1431)</u> <u>(32)</u>	<u>Other Capital Projects</u> <u>Fund</u> <u>(39)</u>	<u>Debt Service</u> <u>(40)</u>	<u>Permanent</u> <u>(90)</u>
<b>Revenues</b>						
6000	Revenue from Local Sources		125,138			
7000	Revenue from State Sources					
8000	Revenue from Federal Sources					
<b>Total Revenues</b>			<b>\$125,138</b>			
<b>Expenditures</b>						
1000	Instruction					
2000	Support Services		160,120			
3000	Operation of Non-Instructional Services		43,096			
4000	Facilities Acquisition, Construction and Improvement Services		2,384,480			
5110	Debt Service					
5130	Refund of Prior Year Revenues / Receipts					
5140	Leases and Other Right-to-Use Arrangements					
<b>Total Expenditures</b>			<b>\$2,587,696</b>			
<b>Excess (Deficiency) Of Revenues Over Expenditures</b>			<b>(\$2,462,558)</b>			
<b>Other Financing Sources (Uses)</b>						
9110	Face Value of Bonds Issued					
9120	Proceeds from Refunding of Bonds					
9130	Bond Premiums					
9200	Proceeds from Extended Term Financing, Leases, and Other Right-to-Use Arrangements					
9300	Interfund Transfers - IN		1,125,075			
9400	Sale of or Compensation for Loss of Fixed Assets					
9710	Transfers from Component Units					
9720	Transfers from Primary Governments					
9910	Other Financing Sources Not Listed in the 9000 Series					
9990	Insurance Recoveries					
5120	Debt Service – Refunded Bonds					
5150	Bond Discounts					
5200	Interfund Transfers – Out					
5300	Transfers Out to Component Units/Primary Governments					
<b>Total Other Financing Sources (Uses)</b>			<b>\$1,125,075</b>			

Amounts Expressed in Whole Dollars		<u>Total Governmental Funds</u>
<b>Revenues</b>		
6000	Revenue from Local Sources	14,989,769
7000	Revenue from State Sources	20,964,155
8000	Revenue from Federal Sources	2,094,745
<b>Total Revenues</b>		<b>\$38,048,669</b>
<b>Expenditures</b>		
1000	Instruction	21,312,506
2000	Support Services	11,546,108
3000	Operation of Non-Instructional Services	959,985
4000	Facilities Acquisition, Construction and Improvement Services	2,387,066
5110	Debt Service	2,101,582
5130	Refund of Prior Year Revenues / Receipts	
5140	Leases and Other Right-to-Use Arrangements	
<b>Total Expenditures</b>		<b>\$38,307,247</b>
<b>Excess (Deficiency) Of Revenues Over Expenditures</b>		<b>(\$258,578)</b>
<b>Other Financing Sources (Uses)</b>		
9110	Face Value of Bonds Issued	
9120	Proceeds from Refunding of Bonds	
9130	Bond Premiums	
9200	Proceeds from Extended Term Financing, Leases, and Other Right-to-Use Arrangements	
9300	Interfund Transfers - IN	1,125,075
9400	Sale of or Compensation for Loss of Fixed Assets	
9710	Transfers from Component Units	
9720	Transfers from Primary Governments	
9910	Other Financing Sources Not Listed in the 9000 Series	
9990	Insurance Recoveries	
5120	Debt Service – Refunded Bonds	
5150	Bond Discounts	
5200	Interfund Transfers – Out	1,125,075
5300	Transfers Out to Component Units/Primary Governments	
<b>Total Other Financing Sources (Uses)</b>		<b>\$0</b>

Amounts Expressed in Whole Dollars		<u>General Fund</u> <u>(10)</u>	<u>Student Sponsored</u> <u>Activity Fund</u> <u>(21)</u>	<u>Public Purpose Trust</u> <u>(27)</u>	<u>Other Compt Approved</u> <u>(28)</u>	<u>Athletic / Activity</u> <u>(29)</u>
<b>Special And Extraordinary Items</b>						
9920	Special Items – Gains					
9930	Extraordinary Items – Gains					
5520	Special Items – Losses					
5530	Extraordinary Items – Losses					
<b>Net Change In Fund Balances</b>		<b>\$1,078,905</b>				
<b>Fund Balance</b>						
0001	Fund Balance - Beginning of Fiscal Year	7,532,852				
<b>Fund Balance - End Of Year</b>		<b>\$8,611,757</b>				



Amounts Expressed in Whole Dollars		<u>Capital Reserve (690.</u> <u>1850)</u> <u>(31)</u>	<u>Capital Reserve (1431)</u> <u>(32)</u>	<u>Other Capital Projects</u> <u>Fund</u> <u>(39)</u>	<u>Debt Service</u> <u>(40)</u>	<u>Permanent</u> <u>(90)</u>
<b>Special And Extraordinary Items</b>						
9920	Special Items – Gains					
9930	Extraordinary Items – Gains					
5520	Special Items – Losses					
5530	Extraordinary Items – Losses					
<b>Net Change In Fund Balances</b>			<b>(\$1,337,483)</b>			
<b>Fund Balance</b>						
0001	Fund Balance - Beginning of Fiscal Year		3,933,750			
<b>Fund Balance - End Of Year</b>			<b>\$2,596,267</b>			

Amounts Expressed in Whole Dollars		<u>Total Governmental</u> <u>Funds</u>
<b>Special And Extraordinary Items</b>		
9920	Special Items – Gains	
9930	Extraordinary Items – Gains	
5520	Special Items – Losses	
5530	Extraordinary Items – Losses	
<b>Net Change In Fund Balances</b>		<b>(\$258,578)</b>
<b>Fund Balance</b>		
0001	Fund Balance - Beginning of Fiscal Year	11,466,602
<b>Fund Balance - End Of Year</b>		<b>\$11,208,024</b>

LEA : 129545003     North Schuylkill SD

Printed 3/6/2025 1:31:46 PM

Amounts Expressed in Whole Dollars		<u>Food Service</u> <u>(51)</u>	<u>Child Care</u> <u>Operations</u> <u>(52)</u>	<u>Other Enterprise</u> <u>(58)</u>	<u>TOTAL</u>	<u>Internal Service</u> <u>(60)</u>
<b>Assets And Deferred Outflows Of Resources</b>						
<b>Current Assets</b>						
0100	Cash and Cash Equivalents	1,218,724			1,218,724	
0110	Investments					
0130	Due From Other Funds					
0141	Due From Other Governments					
0142	State Revenue Receivable					
0143	Federal Revenue Receivable					
0146	Due from Primary Government					
0147	Due from Component Unit					
0150	Other Receivables					
0170	Inventories					
0180	Prepaid Expenses (Expenditures)					
0190	Other Current Assets					
<b>Total Current Assets</b>		<b>\$1,218,724</b>			<b>\$1,218,724</b>	
<b>Noncurrent Assets</b>						
0211	Land					
0212	Site Improvements (Net)					
0220	Buildings and Building Improvements (Net)					
0230	Tangible Property and Intangible Right-To-Use Assets (Net)	195,488			195,488	
0250	Construction in Progress					
0260	Long Term Prepayments					
0290	Other Noncurrent Assets					
<b>Total Noncurrent Assets</b>		<b>\$195,488</b>			<b>\$195,488</b>	
0910	Deferred Outflows of Resources	215,272			215,272	
<b>Total Assets And Deferred Outflows Of Resources</b>		<b>\$1,629,484</b>			<b>\$1,629,484</b>	

Amounts Expressed in Whole Dollars	<u>Food Service</u> <u>(51)</u>	<u>Child Care</u> <u>Operations</u> <u>(52)</u>	<u>Other Enterprise</u> <u>(58)</u>	<u>TOTAL</u>	<u>Internal Service</u> <u>(60)</u>
<b>Liabilities And Deferred Inflows Of Resources And Net Position</b>					
<b>Current Liabilities</b>					
0400 Due to Other Funds	1,678			1,678	
0411 Due to Other Governments					
0413 Due to Component Unit					
0420 Accounts Payable	12,722			12,722	
0430 Contracts Payable					
0440 Current Portion of Long-Term Debt					
0450 Short-Term Payables					
0461 Accrued Salaries and Benefits	23,131			23,131	
0462 Payroll Deductions and Withholding					
0480 Unearned Revenues					
0490 Other Current Liabilities					
<b>Total Current Liabilities</b>	<b>\$37,531</b>			<b>\$37,531</b>	
<b>Noncurrent Liabilities</b>					
0510 Bonds Payable					
0520 Extended-Term Financing Agreements Payable					
0530 Lease and Other Right-To-Use Obligations					
0540 Accumulated Compensated Absences					
0550 Authority Lease Obligations					
0560 Other Post-Employment Benefits (OPEB)					
0570 Net Pension Liability	921,986			921,986	
0599 Other Noncurrent Liabilities					
<b>Total Noncurrent Liabilities</b>	<b>\$921,986</b>			<b>\$921,986</b>	
<b>Total Liabilities</b>	<b>\$959,517</b>			<b>\$959,517</b>	
0950 Deferred Inflows of Resources	32,315			32,315	
<b>Net Position</b>					
0791 Net Investment in Capital Assets	195,488			195,488	
0008 Restricted Net Position (0792 – 0798)					
0799 Unrestricted Net Position	442,164			442,164	
<b>Total Net Position</b>	<b>\$637,652</b>			<b>\$637,652</b>	
<b>Total Liabilities And Deferred Inflows Of Resources And Net Position</b>	<b>\$1,629,484</b>			<b>\$1,629,484</b>	

Amounts Expressed in Whole Dollars		<u>Food Service</u> <u>(51)</u>	<u>Child Care Operations</u> <u>(52)</u>	<u>Other Enterprise</u> <u>(58)</u>	<u>TOTAL</u>	<u>Internal Service</u> <u>(60)</u>
<b>Operating Revenues</b>						
6600	Food Service Revenue	306,856			306,856	
0071	Charges for Services					
0072	Other Operating Revenue	11,789			11,789	
<b>Total Operating Revenues</b>		<b>\$318,645</b>			<b>\$318,645</b>	
<b>Operating Expenses</b>						
100	Personnel Services – Salaries	371,362			371,362	
200	Personnel Services – Employee Benefits	225,194			225,194	
300	Purchased Professional and Technical Services					
400	Purchased Property Services					
500	Other Purchased Services	716,632			716,632	
600	Supplies	82,793			82,793	
740	Depreciation	36,741			36,741	
770	Amortization Expense					
810	Dues and Fees					
880	Refunds of Prior Years' Receipts					
890	Miscellaneous Expenditures					
<b>Total Operating Expenses</b>		<b>\$1,432,722</b>			<b>\$1,432,722</b>	
<b>Operating Income (Loss)</b>		<b>(\$1,114,077)</b>			<b>(\$1,114,077)</b>	
<b>Non Operating Revenues (Expenses)</b>						
6500	Earnings on Investments	53,664			53,664	
6830	Federal Revenue from Intermediary Sources					
6920	Contributions and Donations from Private Sources					
6930	Gains or Losses on Sale of Fixed Assets					
6991	Refunds of a Prior Year Expenditure					
7000	Revenue from State Sources	230,022			230,022	
8000	Revenue from Federal Sources	1,056,681			1,056,681	
9990	Insurance Recoveries					
820	Claims and Judgments Against the LEA					
830	Interest					
<b>TOTAL Non Operating Revenues (Expenses)</b>		<b>\$1,340,367</b>			<b>\$1,340,367</b>	
<b>Income (Loss) Before Contributions And Transfers</b>		<b>\$226,290</b>			<b>\$226,290</b>	

Amounts Expressed in Whole Dollars	<u>Food Service</u> <u>(51)</u>	<u>Child Care Operations</u> <u>(52)</u>	<u>Other Enterprise</u> <u>(58)</u>	<u>TOTAL</u>	<u>Internal Service</u> <u>(60)</u>
<b>Contributions, Transfers, and Special and Extraordinary Items</b>					
5200 Interfund Transfers – Out					
5300 Transfers Out to Component Units/Primary Governments					
5520 Special Items – Losses					
5530 Extraordinary Items – Losses					
9300 Interfund Transfers - IN					
9500 Capital Contributions					
9700 Transfers IN From Component Units/Primary Governments					
9920 Special Items – Gains					
9930 Extraordinary Items – Gains					
<b>Change In Net Position</b>	<b>\$226,290</b>			<b>\$226,290</b>	
0002 Net Position - Beginning of Fiscal Year	411,362			411,362	
0003 Accounting Changes / Residual Equity Transfers					
<b>Net Position - End Of Year</b>	<b>\$637,652</b>			<b>\$637,652</b>	

LEA : 129545003      North Schuylkill SD

Printed 3/6/2025 1:31:56 PM

Amounts Expressed in Whole Dollars		<u>Food Service</u> <u>(51)</u>	<u>Child Care Operations</u> <u>(52)</u>	<u>Other Enterprise</u> <u>(58)</u>	<u>TOTAL</u>	<u>Internal Service(60)</u>
<b>Cash Flows From Operating Activities</b>						
0011	Cash Receipts From Users	299,649			299,649	
0012	Cash Receipts From Assessments Made to Other Funds					
0013	Cash Receipts From Earnings on Investments					
0014	Cash Receipts From Other Operating Revenue					
0015	Cash Payments To Employees For Services	535,072			535,072	
0016	Cash Payments For Insurance Claims					
0017	Cash Payments To Suppliers For Goods and Services	786,703			786,703	
0018	Cash Payments For Other Operating Expenses					
<b>Net Cash Provided By (Used For) Operating Activities</b>		<b>(\$1,022,126)</b>			<b>(\$1,022,126)</b>	
<b>Cash Flows From Non-Capital Financing Activities</b>						
0021	Receipts From Local Sources - 6000					
0022	Receipts From State Sources - 7000	230,022			230,022	
0023	Receipts From Federal Sources -8000	1,056,681			1,056,681	
0024	Notes and Loans Received (Repaid)					
0025	Interest Paid on Notes/Loans - 5100-830					
0026	Operating Transfers In (Out)/Residual Equity Trans					
0027	Operating Transfers In (Out) Primary Government / Comp Unit					
0028	Receipts From Refund of Prior Year Expenditures - 6991					
0029	Special and Extraordinary Gains (losses)					
0030	Receipts from Insurance Recoveries -9990					
<b>Net Cash Prov By (Used for) Non-Capital Financing Activities</b>		<b>\$1,286,703</b>			<b>\$1,286,703</b>	
<b>Cash Flows From Capital and Related Financing Activities</b>						
0031	Payments For Fac Acq, Const, and Imp - 4000	(39,145)			(39,145)	
0032	Proceeds from Disposal of Capital Assets					
0033	Proceeds From Extended Term Financing - 9200					
0034	Principal Paid on Financing Agreements					
0035	Interest Paid on Financing Agreements - 5100-830					
0036	(Inc) Dec in Contributed Capital					
<b>Net Cash Prov By (Used for) Capital and Related Financing Activities</b>		<b>(\$39,145)</b>			<b>(\$39,145)</b>	
<b>Cash Flows From Investing Activities</b>						
0041	Earnings on Investments - 6500	53,664			53,664	
0042	Purchase of Inv Securities / Deposits to Inv Pools					
0043	Receipts From Investment Pool Withdrawals					
0044	Proceeds from Sale and Maturity of Inv Securities					

LEA : 129545003      North Schuylkill SD

Printed 3/6/2025 1:31:56 PM

0045   Loans Received (Paid)

Net Cash Prov By (Used for) Investing Activities	\$53,664	\$53,664
--	----------	----------



LEA : 129545003     North Schuylkill SD

Printed 3/6/2025 1:31:56 PM

	<u>Food Service</u> <u>(51)</u>	<u>Child Care Operations</u> <u>(52)</u>	<u>Other Enterprise</u> <u>(58)</u>	<u>TOTAL</u>	<u>Internal Service</u> <u>(60)</u>
<b>Net Increase (Decrease) in Cash Flows</b>	<b>279,096</b>			<b>279,096</b>	
0004 Cash and Cash Equivalents Beginning of Year	939,628			939,628	
<b>Cash and Cash Equivalents at Year End</b>	<b>\$1,218,724</b>			<b>\$1,218,724</b>	
<hr/>					
<b>Reconciliation of Operating Income (Loss) To Net Cash Provided by (Used For) Operating Activities</b>					
0005 Operating Income (Loss) per REP	(1,114,077)			(1,114,077)	
<b>Adjustments</b>					
0051 Depreciation and Net Amortization	36,741			36,741	
0052 Provision for Uncollectible Accounts					
0053 Other Adjustments					
<b>Effect of Changes in Assets, Liabilities, Deferred Outflows and Deferred Inflows</b>					
0054 (Inc) Dec In Accounts Receivable (0120-0150)					
0055 Advances to Other Funds	123,345			123,345	
0056 (Inc) Dec in Inventories (0170)					
0057 (Inc) Dec in Prepaid Expenses (0180)					
0058 (Inc) Dec in Other Current or Noncurrent Assets					
0064 Deferred Outflows (0910)					
0059 Inc (Dec) in Accounts Payable (0400-0450)	12,722			12,722	
0060 Inc (Dec) in Accrued Salaries/Benefits (0461)	2,575			2,575	
0065 Inc (Dec) in Net Pension Liabilities (0570)	(64,436)			(64,436)	
0066 Inc (Dec) in Other Postemp Benefit Oblig (0560)					
0061 Inc (Dec) in Payroll Deductions/Withholding (0462)					
0062 Inc (Dec) in Unearned Revenue (0480)	(18,996)			(18,996)	
0063 Inc (Dec) in Other Current or Noncurrent Liabilities					
0067 Deferred Inflows (0950)					
<b>Total Adjustments</b>	<b>\$91,951</b>			<b>\$91,951</b>	
<b>Cash Provided By (Used for) Total</b>	<b>(\$1,022,126)</b>			<b>(\$1,022,126)</b>	
<hr/>					

COMBINED STATEMENT OF CASH FLOWS  
SCHEDULE OF NONCASH INVESTING, CAPITAL, AND FINANCING ACTIVITIES

Explanation of Transaction and Balance Sheet Effect	Amount
Total	

LEA : 129545003     North Schuylkill SD

Printed 3/6/2025 1:31:58 PM

Amounts Expressed in Whole Dollars		<u>Private Purpose Trust</u> <u>(71)</u>	<u>Investment Trust</u> <u>(72)</u>	<u>Pension Trust</u> <u>(73)</u>	<u>Student Activity Custodial</u> <u>(81)</u>
<b>Assets And Deferred Outflows Of Resources</b>					
<b>Assets</b>					
0100	Cash and Cash Equivalents	289,364			201,813
0110	Investments				
0130	Due From Other Funds				
0140	Due from Other Governments, Primary Government and Component Units				
0150	Other Receivables				
0170	Inventories				
0180	Prepaid Expenses (Expenditures)				
0190	Other Current Assets				
0220	Buildings and Building Improvements (Net)				
0230	Tangible Property and Intangible Right-To-Use Assets (Net)				
<b>Total Assets</b>		<b>\$289,364</b>			<b>\$201,813</b>
0910	Deferred Outflows of Resources				
<b>Total Assets And Deferred Outflows Of Resources</b>		<b>\$289,364</b>			<b>\$201,813</b>

LEA : 129545003     North Schuylkill SD

Printed 3/6/2025 1:31:58 PM

Amounts Expressed in Whole Dollars		<u>Other Custodial</u> <u>(89)</u>	<u>Fiduciary Component Units</u> <u>(98)</u>	<u>Total Fiduciary Funds</u>
<b>Assets And Deferred Outflows Of Resources</b>				
<b>Assets</b>				
0100	Cash and Cash Equivalents			491,177
0110	Investments			
0130	Due From Other Funds			
0140	Due from Other Governments, Primary Government and Component Units			
0150	Other Receivables			
0170	Inventories			
0180	Prepaid Expenses (Expenditures)			
0190	Other Current Assets			
0220	Buildings and Building Improvements (Net)			
0230	Tangible Property and Intangible Right-To-Use Assets (Net)			
<b>Total Assets</b>				<b>\$491,177</b>
0910	Deferred Outflows of Resources			
<b>Total Assets And Deferred Outflows Of Resources</b>				<b>\$491,177</b>

LEA : 129545003     North Schuylkill SD

Printed 3/6/2025 1:31:58 PM

Amounts Expressed in Whole Dollars		<u>Private Purpose Trust</u> <u>(71)</u>	<u>Investment Trust</u> <u>(72)</u>	<u>Pension Trust</u> <u>(73)</u>	<u>Student Activity Custodial</u> <u>(81)</u>
<b>Liabilities, Deferred Inflows Of Resources And Net Position</b>					
<b>Liabilities</b>					
0400	Due to Other Funds				
0410	Due to Other Governments, Primary Government and Component Units				
0420	Accounts Payable				
0430	Contracts Payable				
0450	Short-Term Payables				
0460	Payroll Accruals and Withholdings				
0480	Unearned Revenues				
0490	Other Current Liabilities				201,813
<b>Total Liabilities</b>					<b>\$201,813</b>
0950	Deferred Inflows of Resources				
<b>Net Position</b>					
0791	Net Investment in Capital Assets				
0009	Restricted Net Position (0792 – 0798)	289,364			
0799	Unrestricted Net Position				
<b>Total Net Position</b>		<b>\$289,364</b>			
<b>Total Liabilities, Deferred Inflows Of Resources And Net Position</b>		<b>\$289,364</b>			<b>\$201,813</b>

LEA : 129545003     North Schuylkill SD

Printed 3/6/2025 1:31:58 PM

Amounts Expressed in Whole Dollars		<u>Other Custodial</u> <u>(89)</u>	<u>Fiduciary Component Units</u> <u>(98)</u>	<u>Total Fiduciary Funds</u>
<b>Liabilities, Deferred Inflows Of Resources And Net Position</b>				
<b>Liabilities</b>				
0400	Due to Other Funds			
0410	Due to Other Governments, Primary Government and Component Units			
0420	Accounts Payable			
0430	Contracts Payable			
0450	Short-Term Payables			
0460	Payroll Accruals and Withholdings			
0480	Unearned Revenues			
0490	Other Current Liabilities			201,813
<b>Total Liabilities</b>				<b>\$201,813</b>
0950	Deferred Inflows of Resources			
<b>Net Position</b>				
0791	Net Investment in Capital Assets			
0009	Restricted Net Position (0792 – 0798)			289,364
0799	Unrestricted Net Position			
<b>Total Net Position</b>				<b>\$289,364</b>
<b>Total Liabilities, Deferred Inflows Of Resources And Net Position</b>				<b>\$491,177</b>

LEA : 129545003     North Schuylkill SD

Printed 3/6/2025 1:31:59 PM

Amounts Expressed in Whole Dollars		<u>Private Purpose Trust</u> <u>(71)</u>	<u>Investment Trust</u> <u>(72)</u>	<u>Pension Trust</u> <u>(73)</u>	<u>Student Activity</u> <u>Custodial</u> <u>(81)</u>	<u>Other Custodial</u> <u>(89)</u>	<u>Fiduciary Component</u> <u>Units</u> <u>(98)</u>
<b>Additions</b>							
0091	Gifts and Contributions	750					
0095	Net Investment Earnings	968					
0092	Other Additions						
<b>Deductions</b>							
0093	Scholarships Awarded	5,000					
0094	Other Deductions						
<b>Change In Net Position</b>		<b>(\$3,282)</b>					
0006	Net Position – Beginning of Fiscal Year	292,646					
0007	Net Position Held in Trust for Pension Benefits						
<b>Net Position - End of Fiscal Year</b>		<b>\$289,364</b>					

LEA : 129545003     North Schuylkill SD

Printed 3/6/2025 1:31:59 PM

Amounts Expressed in Whole Dollars		<u>Total Fiduciary</u>
		<u>Funds</u>
<b>Additions</b>		
0091	Gifts and Contributions	750
0095	Net Investment Earnings	968
0092	Other Additions	
<b>Deductions</b>		
0093	Scholarships Awarded	5,000
0094	Other Deductions	
<b>Change In Net Position</b>		<b>(\$3,282)</b>
0006	Net Position – Beginning of Fiscal Year	292,646
0007	Net Position Held in Trust for Pension Benefits	
<b>Net Position - End of Fiscal Year</b>		<b>\$289,364</b>



	Revenue Reported In Current Year	Current Year Tax Accrual	Prior Year Tax Accrual	Taxes Collected In Current Year
<b>Revenue from Local Sources</b>				
6111 Current Real Estate Taxes	9,102,231.61			9,102,231.61
6113 Public Utility Realty Taxes	11,633.90			11,633.90
6114 Payments in Lieu of Current Taxes - State / Local	13,909.59			13,909.59
6143 Current Act 511 Local Services Taxes	23,452.83			23,452.83
6151 Current Act 511 Earned Income Taxes	1,823,512.03			1,823,512.03
6152 Current Act 511 Occupation Taxes	718,413.40			718,413.40
6153 Current Act 511 Real Estate Transfer Taxes	191,551.53			191,551.53
6411 Delinquent Real Estate Taxes	1,087,054.98			1,087,054.98
6452 Delinquent Act 511 Occupation Taxes	539,067.78			539,067.78
6500 Earnings on Investments	514,328.31			
6700 Revenues from LEA Activities	79,542.79			
6821 State Revenue Received from Other Pennsylvania Public LEAs	72,736.85			
6832 Federal IDEA Revenue Received as Pass Through	383,273.00			
6910 Rentals	37,308.84			
6920 Contributions and Donations from Private Sources	30,101.62			
6941 Regular Day School Tuition	8,958.92			
6942 Summer School Tuition	1,920.00			
6944 Receipts from Other LEAs in Pennsylvania - Education	163,886.10			
6961 Transportation Services Provided Other Pennsylvania LEAs	46,800.00			
6999 Other Revenues Not Specified Above	14,946.73			
<b>TOTAL Revenue from Local Sources</b>	<b>\$14,864,630.81</b>			<b>\$13,510,827.65</b>

	Revenue Reported In Current Year			
<b><u>Revenue from State Sources</u></b>				
7111 Basic Education Funding-Formula	11,443,086.27			
7160 Tuition for Orphans Subsidy	15,896.17			
7271 Special Education funds for School-Aged Pupils	1,801,706.60			
7311 Pupil Transportation Subsidy	1,752,576.59			
7312 Nonpublic and Charter School Pupil Transportation Subsidy	21,175.00			
7320 Rental and Sinking Fund Payments / Building Reimbursement Subsidy	630,325.47			
7330 Health Services (Medical, Dental, Nurse, Act 25)	38,619.98			
7340 State Property Tax Reduction Allocation	526,930.08			
7505 Ready to Learn Block Grant	346,904.00			
7599 Other State Revenue Not Listed Elsewhere in the 7000 Series	215,534.12			
7810 State Share of Social Security and Medicare Taxes	725,795.06			
7820 State Share of Retirement Contributions	3,445,605.45			
<b>TOTAL Revenue from State Sources</b>	<b>\$20,964,154.79</b>			

Revenue Reported In Current Year				
Revenue from Federal Sources				
8514 Title I - Improving the Academic Achievement of the Disadvantaged	595,142.00			
8515 Title II - Preparing, Training, and Recruiting High Quality Teachers and Principals	74,670.00			
8517 Title IV - 21st Century Schools	44,948.00			
8743 ESSER II - Elementary and Secondary School Emergency Relief Fund	1,082,164.26			
8810 School-Based Access Medicaid Reimbursement Program (SBAP) Reimbursements (Access)	297,820.66			
TOTAL Revenue from Federal Sources	\$2,094,744.92			
TOTAL FROM ALL SOURCES	\$37,923,530.52			\$13,510,827.65

LEA : 129545003     North Schuylkill SD

Printed 3/6/2025 1:32:03 PM

	<u>General Fund (10)</u>	<u>Student Sponsored Activity Fund (21)</u>	<u>Public Purpose Trust (27)</u>	<u>Other Compt Approved (28)</u>	<u>Athletic / Activity (29)</u>	<u>Capital Reserve (690, 1850) (31)</u>
<b>6000 Revenue from Local Sources</b>						
6111 Current Real Estate Taxes	9,102,231.61					
6113 Public Utility Realty Taxes	11,633.90					
6114 Payments in Lieu of Current Taxes - State / Local	13,909.59					
6143 Current Act 511 Local Services Taxes	23,452.83					
6151 Current Act 511 Earned Income Taxes	1,823,512.03					
6152 Current Act 511 Occupation Taxes	718,413.40					
6153 Current Act 511 Real Estate Transfer Taxes	191,551.53					
6411 Delinquent Real Estate Taxes	1,087,054.98					
6452 Delinquent Act 511 Occupation Taxes	539,067.78					
6500 Earnings on Investments	514,328.31					
6700 Revenues from LEA Activities	79,542.79					
6821 State Revenue Received from Other Pennsylvania Public LEAs	72,736.85					
6832 Federal IDEA Revenue Received as Pass Through	383,273.00					
6910 Rentals	37,308.84					
6920 Contributions and Donations from Private Sources	30,101.62					
6941 Regular Day School Tuition	8,958.92					
6942 Summer School Tuition	1,920.00					
6944 Receipts from Other LEAs in Pennsylvania - Education	163,886.10					
6961 Transportation Services Provided Other Pennsylvania LEAs	46,800.00					
6999 Other Revenues Not Specified Above	14,946.73					
<b>6000 Total Revenue from Local Sources</b>	<b>\$14,864,630.81</b>					
<b>7000 Revenue from State Sources</b>						
7111 Basic Education Funding-Formula	11,443,086.27					
7160 Tuition for Orphans Subsidy	15,896.17					
7271 Special Education funds for School-Aged Pupils	1,801,706.60					
7311 Pupil Transportation Subsidy	1,752,576.59					
7312 Nonpublic and Charter School Pupil Transportation Subsidy	21,175.00					
7320 Rental and Sinking Fund Payments / Building Reimbursement Subsidy	630,325.47					
7330 Health Services (Medical, Dental, Nurse, Act 25)	38,619.98					
7340 State Property Tax Reduction Allocation	526,930.08					
7505 Ready to Learn Block Grant	346,904.00					
7599 Other State Revenue Not Listed Elsewhere in the 7000 Series	215,534.12					
7810 State Share of Social Security and Medicare Taxes	725,795.06					
7820 State Share of Retirement Contributions	3,445,605.45					
<b>7000 Total Revenue from State Sources</b>	<b>\$20,964,154.79</b>					

LEA : 129545003     North Schuylkill SD

Printed 3/6/2025 1:32:03 PM

	<u>Capital Reserve</u> <u>(1431) (32)</u>	<u>Other Capital</u> <u>Projects Fund (39)</u>	<u>Debt Service (40)</u>	<u>Permanent (90)</u>	<u>Total</u>
<b>6000 Revenue from Local Sources</b>					
6111 Current Real Estate Taxes					9,102,231.61
6113 Public Utility Realty Taxes					11,633.90
6114 Payments in Lieu of Current Taxes - State / Local					13,909.59
6143 Current Act 511 Local Services Taxes					23,452.83
6151 Current Act 511 Earned Income Taxes					1,823,512.03
6152 Current Act 511 Occupation Taxes					718,413.40
6153 Current Act 511 Real Estate Transfer Taxes					191,551.53
6411 Delinquent Real Estate Taxes					1,087,054.98
6452 Delinquent Act 511 Occupation Taxes					539,067.78
6500 Earnings on Investments	125,138.00				639,466.31
6700 Revenues from LEA Activities					79,542.79
6821 State Revenue Received from Other Pennsylvania Public LEAs					72,736.85
6832 Federal IDEA Revenue Received as Pass Through					383,273.00
6910 Rentals					37,308.84
6920 Contributions and Donations from Private Sources					30,101.62
6941 Regular Day School Tuition					8,958.92
6942 Summer School Tuition					1,920.00
6944 Receipts from Other LEAs in Pennsylvania - Education					163,886.10
6961 Transportation Services Provided Other Pennsylvania LEAs					46,800.00
6999 Other Revenues Not Specified Above					14,946.73
<b>6000 Total Revenue from Local Sources</b>	<b>\$125,138.00</b>				<b>\$14,989,768.81</b>
<b>7000 Revenue from State Sources</b>					
7111 Basic Education Funding-Formula					11,443,086.27
7160 Tuition for Orphans Subsidy					15,896.17
7271 Special Education funds for School-Aged Pupils					1,801,706.60
7311 Pupil Transportation Subsidy					1,752,576.59
7312 Nonpublic and Charter School Pupil Transportation Subsidy					21,175.00
7320 Rental and Sinking Fund Payments / Building Reimbursement Subsidy					630,325.47
7330 Health Services (Medical, Dental, Nurse, Act 25)					38,619.98
7340 State Property Tax Reduction Allocation					526,930.08
7505 Ready to Learn Block Grant					346,904.00
7599 Other State Revenue Not Listed Elsewhere in the 7000 Series					215,534.12
7810 State Share of Social Security and Medicare Taxes					725,795.06
7820 State Share of Retirement Contributions					3,445,605.45
<b>7000 Total Revenue from State Sources</b>					<b>\$20,964,154.79</b>

LEA : 129545003     North Schuylkill SD

Printed 3/6/2025 1:32:03 PM

	<u>General Fund (10)</u>	<u>Student Sponsored Activity Fund (21)</u>	<u>Public Purpose Trust (27)</u>	<u>Other Compt Approved (28)</u>	<u>Athletic / Activity (29)</u>	<u>Capital Reserve (690, 1850) (31)</u>
<b>8000 Revenue from Federal Sources</b>						
8514 Title I - Improving the Academic Achievement of the Disadvantaged	595,142.00					
8515 Title II - Preparing, Training, and Recruiting High Quality Teachers and Principals	74,670.00					
8517 Title IV - 21st Century Schools	44,948.00					
8743 ESSER II - Elementary and Secondary School Emergency Relief Fund	1,082,164.26					
8810 School-Based Access Medicaid Reimbursement Program (SBAP) Reimbursements (Access)	297,820.66					
<b>8000 Total Revenue from Federal Sources</b>	<b>\$2,094,744.92</b>					
<b>9000 Other Financing Sources</b>						
9310 General Fund Transfers						
<b>9000 Total Other Financing Sources</b>						
<b>Total From All Sources</b>	<b>\$37,923,530.52</b>					

LEA : 129545003     North Schuylkill SD

Printed 3/6/2025 1:32:03 PM

	<u>Capital Reserve</u> <u>(1431) (32)</u>	<u>Other Capital</u> <u>Projects Fund (39)</u>	<u>Debt Service (40)</u>	<u>Permanent (90)</u>	<u>Total</u>
<b>8000 Revenue from Federal Sources</b>					
8514 Title I - Improving the Academic Achievement of the Disadvantaged					595,142.00
8515 Title II - Preparing, Training, and Recruiting High Quality Teachers and Principals					74,670.00
8517 Title IV - 21st Century Schools					44,948.00
8743 ESSER II - Elementary and Secondary School Emergency Relief Fund					1,082,164.26
8810 School-Based Access Medicaid Reimbursement Program (SBAP) Reimbursements (Access)					297,820.66
<b>8000 Total Revenue from Federal Sources</b>					<b>\$2,094,744.92</b>
<b>9000 Other Financing Sources</b>					
9310 General Fund Transfers	1,125,075.26				1,125,075.26
<b>9000 Total Other Financing Sources</b>	<b>\$1,125,075.26</b>				<b>\$1,125,075.26</b>
<b>Total From All Sources</b>	<b>\$1,250,213.26</b>				<b>\$39,173,743.78</b>

LEA : 129545003     North Schuylkill SD

Printed 3/6/2025 1:32:05 PM

	<u>General Fund (10)</u>	<u>Student Sponsored Activity Fund (21)</u>	<u>Public Purpose Trust (27)</u>	<u>Other Compt Approved (28)</u>	<u>Athletic / Activity (29)</u>	<u>Capital Reserve (690. 1850) (31)</u>
Revenue from Local Sources	14,864,630.81					
Revenue from State Sources	20,964,154.79					
Revenue from Federal Sources	2,094,744.92					
Other Financing Sources						
Total From All Sources	\$37,923,530.52					



LEA : 129545003     North Schuylkill SD

Printed 3/6/2025 1:32:05 PM

	<u>Capital Reserve (1431)</u> <u>(32)</u>	<u>Other Capital Projects</u> <u>Fund (39)</u>	<u>Debt Service (40)</u>	<u>Permanent (90)</u>	<u>Total</u>
Revenue from Local Sources	125,138.00				14,989,768.81
Revenue from State Sources					20,964,154.79
Revenue from Federal Sources					2,094,744.92
Other Financing Sources	1,125,075.26				1,125,075.26
Total From All Sources	\$1,250,213.26				\$39,173,743.78

LEA : 129545003      North Schuylkill SD

Printed 3/6/2025 1:32:08 PM

General Fund (10)

1000 Instruction		Total
<b>100 <u>Personnel Services – Salaries</u></b>		
100 Personnel Services – Salaries		9,439,371.67
<b>Total Personnel Services – Salaries</b>		<b>\$9,439,371.67</b>
<b>200 <u>Personnel Services – Employee Benefits</u></b>		
210 Group Insurance – Contracted Provider		3,177,259.48
220 Social Security Contributions		707,737.07
230 PSERS Retirement Contributions		3,157,220.02
260 Workers' Compensation		47,198.76
291 Other Retirement Plans		60,000.00
<b>Total Personnel Services – Employee Benefits</b>		<b>\$7,149,415.33</b>
<b>300 <u>Purchased Professional and Technical Services</u></b>		
322 Professional Educational Services – Ius		436,611.22
323 Professional Educational Services – Other Educational Agencies		623,605.31
329 Professional Educational Services – Other		12,077.00
330 Other Professional Services		2,200.00
390 Other Purchased Professional and Technical Services		51,342.71
<b>Total Purchased Professional and Technical Services</b>		<b>\$1,125,836.24</b>
<b>400 <u>Purchased Property Services</u></b>		
430 Repairs and Maintenance Services		523.46
440 Rentals		50,933.72
<b>Total Purchased Property Services</b>		<b>\$51,457.18</b>
<b>500 <u>Other Purchased Services</u></b>		
510 Student Transportation Services		13,428.92
530 Communications		17,190.67
561 Tuition To Other School Districts Within the State		451,467.05
562 Tuition To Pennsylvania Charter Schools		1,758,439.35
564 Tuition To Career and Technology Centers		735,101.48
580 Travel		1,235.10
594 IU Payment By Withholding for Institutionalized Children's Programs – Special Classes		340.44
<b>Total Other Purchased Services</b>		<b>\$2,977,203.01</b>
<b>600 <u>Supplies</u></b>		
610 General Supplies		312,608.65
630 Food		752.05
640 Books and Periodicals		164,280.74
<b>Total Supplies</b>		<b>\$477,641.44</b>
<b>700 <u>Property</u></b>		
762 Capitalized Equipment - Replacement		68,164.25
<b>Total Property</b>		<b>\$68,164.25</b>
<b>800 <u>Other Objects</u></b>		
810 Dues and Fees		4,817.05
820 Claims and Judgments Against the LEA		18,600.00

LEA : 129545003     North Schuylkill SD

Printed 3/6/2025 1:32:08 PM

General Fund (10)

1000 Instruction

		<u>Total</u>
Total Other Objects		\$23,417.05
Total 1000 Instruction		\$21,312,506.17

LEA : 129545003     North Schuylkill SD

Printed 3/6/2025 1:32:08 PM

General Fund (10)

1100 Regular Programs – Elementary / Secondary	Elementary	Secondary	Federal	Total
<b>100 <u>Personnel Services – Salaries</u></b>				
100 Personnel Services – Salaries	2,774,868.06	2,926,477.11	1,272,119.71	6,973,464.88
<b>Total Personnel Services – Salaries</b>	<b>\$2,774,868.06</b>	<b>\$2,926,477.11</b>	<b>\$1,272,119.71</b>	<b>\$6,973,464.88</b>
<b>200 <u>Personnel Services – Employee Benefits</u></b>				
210 Group Insurance – Contracted Provider	863,770.43	1,004,341.98	495,629.32	2,363,741.73
220 Social Security Contributions	208,278.64	219,358.97	95,234.44	522,872.05
230 PSERS Retirement Contributions	920,223.68	975,570.94	432,520.75	2,328,315.37
260 Workers' Compensation	13,873.81	14,633.34	6,360.79	34,867.94
291 Other Retirement Plans	50,000.00			50,000.00
<b>Total Personnel Services – Employee Benefits</b>	<b>\$2,056,146.56</b>	<b>\$2,213,905.23</b>	<b>\$1,029,745.30</b>	<b>\$5,299,797.09</b>
<b>300 <u>Purchased Professional and Technical Services</u></b>				
323 Professional Educational Services – Other Educational Agencies	148,043.76	475,561.55		623,605.31
329 Professional Educational Services – Other	325.00	670.00	570.00	1,565.00
330 Other Professional Services	2,200.00			2,200.00
390 Other Purchased Professional and Technical Services			23,473.49	23,473.49
<b>Total Purchased Professional and Technical Services</b>	<b>\$150,568.76</b>	<b>\$476,231.55</b>	<b>\$24,043.49</b>	<b>\$650,843.80</b>
<b>400 <u>Purchased Property Services</u></b>				
430 Repairs and Maintenance Services	210.46	313.00		523.46
440 Rentals	25,751.61	25,182.11		50,933.72
<b>Total Purchased Property Services</b>	<b>\$25,962.07</b>	<b>\$25,495.11</b>		<b>\$51,457.18</b>
<b>500 <u>Other Purchased Services</u></b>				
510 Student Transportation Services	2,960.66	6,591.92		9,552.58
530 Communications	368.25	16,822.42		17,190.67
562 Tuition To Pennsylvania Charter Schools	856,441.67	901,997.68		1,758,439.35
580 Travel	8.04	150.01	192.40	350.45
<b>Total Other Purchased Services</b>	<b>\$859,778.62</b>	<b>\$925,562.03</b>	<b>\$192.40</b>	<b>\$1,785,533.05</b>
<b>600 <u>Supplies</u></b>				
610 General Supplies	82,289.96	182,077.04	11,463.68	275,830.68
630 Food		597.12		597.12
640 Books and Periodicals	30,585.93	31,059.94	102,422.92	164,068.79
<b>Total Supplies</b>	<b>\$112,875.89</b>	<b>\$213,734.10</b>	<b>\$113,886.60</b>	<b>\$440,496.59</b>
<b>700 <u>Property</u></b>				
762 Capitalized Equipment - Replacement	34,082.12	34,082.13		68,164.25
<b>Total Property</b>	<b>\$34,082.12</b>	<b>\$34,082.13</b>		<b>\$68,164.25</b>
<b>800 <u>Other Objects</u></b>				
810 Dues and Fees	589.00	3,421.00	120.00	4,130.00
<b>Total Other Objects</b>	<b>\$589.00</b>	<b>\$3,421.00</b>	<b>\$120.00</b>	<b>\$4,130.00</b>
<b>Total 1100 Regular Programs – Elementary / Secondary</b>	<b>\$6,014,871.08</b>	<b>\$6,818,908.26</b>	<b>\$2,440,107.50</b>	<b>\$15,273,886.84</b>

LEA : 129545003     North Schuylkill SD

Printed 3/6/2025 1:32:08 PM

General Fund (10)

1110 Regular Programs

	<u>Elementary</u>	<u>Secondary</u>	<u>Federal</u>	<u>Total</u>
<b>100 <u>Personnel Services – Salaries</u></b>				
100 Personnel Services – Salaries	2,774,868.06	2,926,477.11	143,805.97	5,845,151.14
<b>Total Personnel Services – Salaries</b>	<b>\$2,774,868.06</b>	<b>\$2,926,477.11</b>	<b>\$143,805.97</b>	<b>\$5,845,151.14</b>
<b>200 <u>Personnel Services – Employee Benefits</u></b>				
210 Group Insurance – Contracted Provider	863,770.43	1,004,341.98	63,429.56	1,931,541.97
220 Social Security Contributions	208,278.64	219,358.97	10,713.62	438,351.23
230 PSERS Retirement Contributions	920,223.68	975,570.94	48,894.11	1,944,688.73
260 Workers' Compensation	13,873.81	14,633.34	719.15	29,226.30
291 Other Retirement Plans	50,000.00			50,000.00
<b>Total Personnel Services – Employee Benefits</b>	<b>\$2,056,146.56</b>	<b>\$2,213,905.23</b>	<b>\$123,756.44</b>	<b>\$4,393,808.23</b>
<b>300 <u>Purchased Professional and Technical Services</u></b>				
323 Professional Educational Services – Other Educational Agencies	148,043.76	475,561.55		623,605.31
329 Professional Educational Services – Other	325.00	670.00		995.00
330 Other Professional Services	2,200.00			2,200.00
<b>Total Purchased Professional and Technical Services</b>	<b>\$150,568.76</b>	<b>\$476,231.55</b>		<b>\$626,800.31</b>
<b>400 <u>Purchased Property Services</u></b>				
430 Repairs and Maintenance Services	210.46	313.00		523.46
440 Rentals	25,751.61	25,182.11		50,933.72
<b>Total Purchased Property Services</b>	<b>\$25,962.07</b>	<b>\$25,495.11</b>		<b>\$51,457.18</b>
<b>500 <u>Other Purchased Services</u></b>				
510 Student Transportation Services	2,960.66	6,591.92		9,552.58
530 Communications	368.25	16,822.42		17,190.67
562 Tuition To Pennsylvania Charter Schools	856,441.67	901,997.68		1,758,439.35
580 Travel	8.04	150.01		158.05
<b>Total Other Purchased Services</b>	<b>\$859,778.62</b>	<b>\$925,562.03</b>		<b>\$1,785,340.65</b>
<b>600 <u>Supplies</u></b>				
610 General Supplies	82,289.96	182,077.04	4,662.07	269,029.07
630 Food		597.12		597.12
640 Books and Periodicals	30,585.93	31,059.94		61,645.87
<b>Total Supplies</b>	<b>\$112,875.89</b>	<b>\$213,734.10</b>	<b>\$4,662.07</b>	<b>\$331,272.06</b>
<b>700 <u>Property</u></b>				
762 Capitalized Equipment - Replacement	34,082.12	34,082.13		68,164.25
<b>Total Property</b>	<b>\$34,082.12</b>	<b>\$34,082.13</b>		<b>\$68,164.25</b>
<b>800 <u>Other Objects</u></b>				
810 Dues and Fees	589.00	3,421.00		4,010.00
<b>Total Other Objects</b>	<b>\$589.00</b>	<b>\$3,421.00</b>		<b>\$4,010.00</b>
<b>Total 1110 Regular Programs</b>	<b>\$6,014,871.08</b>	<b>\$6,818,908.26</b>	<b>\$272,224.48</b>	<b>\$13,106,003.82</b>

LEA : 129545003     North Schuylkill SD

Printed 3/6/2025 1:32:08 PM

General Fund (10)

1190 Federally-Funded Regular Programs

	<u>Elementary</u>	<u>Secondary</u>	<u>Federal</u>	<u>Total</u>
<b>100 <u>Personnel Services – Salaries</u></b>				
100 Personnel Services – Salaries			1,128,313.74	1,128,313.74
<b>Total Personnel Services – Salaries</b>			<b>\$1,128,313.74</b>	<b>\$1,128,313.74</b>
<b>200 <u>Personnel Services – Employee Benefits</u></b>				
210 Group Insurance – Contracted Provider			432,199.76	432,199.76
220 Social Security Contributions			84,520.82	84,520.82
230 PSERS Retirement Contributions			383,626.64	383,626.64
260 Workers' Compensation			5,641.64	5,641.64
<b>Total Personnel Services – Employee Benefits</b>			<b>\$905,988.86</b>	<b>\$905,988.86</b>
<b>300 <u>Purchased Professional and Technical Services</u></b>				
329 Professional Educational Services – Other			570.00	570.00
390 Other Purchased Professional and Technical Services			23,473.49	23,473.49
<b>Total Purchased Professional and Technical Services</b>			<b>\$24,043.49</b>	<b>\$24,043.49</b>
<b>500 <u>Other Purchased Services</u></b>				
580 Travel			192.40	192.40
<b>Total Other Purchased Services</b>			<b>\$192.40</b>	<b>\$192.40</b>
<b>600 <u>Supplies</u></b>				
610 General Supplies			6,801.61	6,801.61
640 Books and Periodicals			102,422.92	102,422.92
<b>Total Supplies</b>			<b>\$109,224.53</b>	<b>\$109,224.53</b>
<b>800 <u>Other Objects</u></b>				
810 Dues and Fees			120.00	120.00
<b>Total Other Objects</b>			<b>\$120.00</b>	<b>\$120.00</b>
<b>Total 1190 Federally-Funded Regular Programs</b>			<b>\$2,167,883.02</b>	<b>\$2,167,883.02</b>

LEA : 129545003     North Schuylkill SD

Printed 3/6/2025 1:32:08 PM

General Fund (10)

1200 Special Programs – Elementary / Secondary	Elementary	Secondary	Federal	Total
<b>100 Personnel Services – Salaries</b>				
100 Personnel Services – Salaries	1,349,608.98	1,066,552.23		2,416,161.21
<b>Total Personnel Services – Salaries</b>	<b>\$1,349,608.98</b>	<b>\$1,066,552.23</b>		<b>\$2,416,161.21</b>
<b>200 Personnel Services – Employee Benefits</b>				
210 Group Insurance – Contracted Provider	492,533.86	320,983.89		813,517.75
220 Social Security Contributions	101,262.31	79,870.84		181,133.15
230 PSERS Retirement Contributions	450,221.89	361,835.62		812,057.51
260 Workers' Compensation	6,748.61	5,333.28		12,081.89
291 Other Retirement Plans		10,000.00		10,000.00
<b>Total Personnel Services – Employee Benefits</b>	<b>\$1,050,766.67</b>	<b>\$778,023.63</b>		<b>\$1,828,790.30</b>
<b>300 Purchased Professional and Technical Services</b>				
322 Professional Educational Services – lus	35,009.28	18,328.94	383,273.00	436,611.22
329 Professional Educational Services – Other	8,550.00	1,962.00		10,512.00
390 Other Purchased Professional and Technical Services	27,869.22			27,869.22
<b>Total Purchased Professional and Technical Services</b>	<b>\$71,428.50</b>	<b>\$20,290.94</b>	<b>\$383,273.00</b>	<b>\$474,992.44</b>
<b>500 Other Purchased Services</b>				
510 Student Transportation Services		783.23		783.23
580 Travel	588.99	295.66		884.65
594 IU Payment By Withholding for Institutionalized Children’s Programs – Special Classes		340.44		340.44
<b>Total Other Purchased Services</b>	<b>\$588.99</b>	<b>\$1,419.33</b>		<b>\$2,008.32</b>
<b>600 Supplies</b>				
610 General Supplies	13,526.15	20,693.53		34,219.68
640 Books and Periodicals	1.10	210.85		211.95
<b>Total Supplies</b>	<b>\$13,527.25</b>	<b>\$20,904.38</b>		<b>\$34,431.63</b>
<b>800 Other Objects</b>				
810 Dues and Fees	472.05	215.00		687.05
820 Claims and Judgments Against the LEA	18,600.00			18,600.00
<b>Total Other Objects</b>	<b>\$19,072.05</b>	<b>\$215.00</b>		<b>\$19,287.05</b>
<b>Total 1200 Special Programs – Elementary / Secondary</b>	<b>\$2,504,992.44</b>	<b>\$1,887,405.51</b>	<b>\$383,273.00</b>	<b>\$4,775,670.95</b>

LEA : 129545003     North Schuylkill SD

Printed 3/6/2025 1:32:08 PM

General Fund (10)

1210 Life Skills Support

	<u>Elementary</u>	<u>Secondary</u>	<u>Federal</u>	<u>Total</u>
<b>100 <u>Personnel Services – Salaries</u></b>				
100 Personnel Services – Salaries	209,174.25	87,376.78		296,551.03
<b>Total Personnel Services – Salaries</b>	<b>\$209,174.25</b>	<b>\$87,376.78</b>		<b>\$296,551.03</b>
<b>200 <u>Personnel Services – Employee Benefits</u></b>				
210 Group Insurance – Contracted Provider	66,996.60	32,033.68		99,030.28
220 Social Security Contributions	15,662.11	6,462.36		22,124.47
230 PSERS Retirement Contributions	69,470.97	29,674.01		99,144.98
260 Workers' Compensation	1,045.95	437.09		1,483.04
<b>Total Personnel Services – Employee Benefits</b>	<b>\$153,175.63</b>	<b>\$68,607.14</b>		<b>\$221,782.77</b>
<b>300 <u>Purchased Professional and Technical Services</u></b>				
322 Professional Educational Services – Ius			91,529.72	91,529.72
329 Professional Educational Services – Other	405.00			405.00
<b>Total Purchased Professional and Technical Services</b>	<b>\$405.00</b>		<b>\$91,529.72</b>	<b>\$91,934.72</b>
<b>500 <u>Other Purchased Services</u></b>				
510 Student Transportation Services		783.23		783.23
<b>Total Other Purchased Services</b>		<b>\$783.23</b>		<b>\$783.23</b>
<b>600 <u>Supplies</u></b>				
610 General Supplies	2,100.00	9,368.71		11,468.71
<b>Total Supplies</b>	<b>\$2,100.00</b>	<b>\$9,368.71</b>		<b>\$11,468.71</b>
<b>Total 1210 Life Skills Support</b>	<b>\$364,854.88</b>	<b>\$166,135.86</b>	<b>\$91,529.72</b>	<b>\$622,520.46</b>



LEA : 129545003      North Schuylkill SD

Printed 3/6/2025 1:32:08 PM

General Fund (10)

1220 Sensory Support

	<u>Elementary</u>	<u>Secondary</u>	<u>Federal</u>	<u>Total</u>
<b>100 <u>Personnel Services – Salaries</u></b>				
100 Personnel Services – Salaries	198,118.50	44,582.40		242,700.90
<b>Total Personnel Services – Salaries</b>	<b>\$198,118.50</b>	<b>\$44,582.40</b>		<b>\$242,700.90</b>
<b>200 <u>Personnel Services – Employee Benefits</u></b>				
210 Group Insurance – Contracted Provider	107,232.66	15,628.32		122,860.98
220 Social Security Contributions	14,793.96	3,259.69		18,053.65
230 PSERS Retirement Contributions	67,360.27	15,157.98		82,518.25
260 Workers' Compensation	990.74	222.84		1,213.58
<b>Total Personnel Services – Employee Benefits</b>	<b>\$190,377.63</b>	<b>\$34,268.83</b>		<b>\$224,646.46</b>
<b>300 <u>Purchased Professional and Technical Services</u></b>				
322 Professional Educational Services – Ius	16,045.62			16,045.62
<b>Total Purchased Professional and Technical Services</b>	<b>\$16,045.62</b>			<b>\$16,045.62</b>
<b>500 <u>Other Purchased Services</u></b>				
580 Travel	588.99	275.56		864.55
<b>Total Other Purchased Services</b>	<b>\$588.99</b>	<b>\$275.56</b>		<b>\$864.55</b>
<b>600 <u>Supplies</u></b>				
640 Books and Periodicals	1.10	210.85		211.95
<b>Total Supplies</b>	<b>\$1.10</b>	<b>\$210.85</b>		<b>\$211.95</b>
<b>800 <u>Other Objects</u></b>				
810 Dues and Fees	472.05	215.00		687.05
820 Claims and Judgments Against the LEA	18,600.00			18,600.00
<b>Total Other Objects</b>	<b>\$19,072.05</b>	<b>\$215.00</b>		<b>\$19,287.05</b>
<b>Total 1220 Sensory Support</b>	<b>\$424,203.89</b>	<b>\$79,552.64</b>		<b>\$503,756.53</b>

LEA : 129545003     North Schuylkill SD

Printed 3/6/2025 1:32:08 PM

General Fund (10)

1230 Emotional Support

	<u>Elementary</u>	<u>Secondary</u>	<u>Federal</u>	<u>Total</u>
<b>100 <u>Personnel Services – Salaries</u></b>				
100 Personnel Services – Salaries	334,997.00	237,809.66		572,806.66
<b>Total Personnel Services – Salaries</b>	<b>\$334,997.00</b>	<b>\$237,809.66</b>		<b>\$572,806.66</b>
<b>200 <u>Personnel Services – Employee Benefits</u></b>				
210 Group Insurance – Contracted Provider	51,103.42	50,976.61		102,080.03
220 Social Security Contributions	25,210.86	17,922.98		43,133.84
230 PSERS Retirement Contributions	110,007.67	80,165.22		190,172.89
260 Workers' Compensation	1,675.18	1,189.25		2,864.43
291 Other Retirement Plans		10,000.00		10,000.00
<b>Total Personnel Services – Employee Benefits</b>	<b>\$187,997.13</b>	<b>\$160,254.06</b>		<b>\$348,251.19</b>
<b>300 <u>Purchased Professional and Technical Services</u></b>				
322 Professional Educational Services – lus			228,100.69	228,100.69
329 Professional Educational Services – Other	1,953.00			1,953.00
390 Other Purchased Professional and Technical Services	27,869.22			27,869.22
<b>Total Purchased Professional and Technical Services</b>	<b>\$29,822.22</b>		<b>\$228,100.69</b>	<b>\$257,922.91</b>
<b>600 <u>Supplies</u></b>				
610 General Supplies	5,516.97	5,796.82		11,313.79
<b>Total Supplies</b>	<b>\$5,516.97</b>	<b>\$5,796.82</b>		<b>\$11,313.79</b>
<b>Total 1230 Emotional Support</b>	<b>\$558,333.32</b>	<b>\$403,860.54</b>	<b>\$228,100.69</b>	<b>\$1,190,294.55</b>

LEA : 129545003     North Schuylkill SD

Printed 3/6/2025 1:32:08 PM

General Fund (10)

1240 Academic Support

	<u>Elementary</u>	<u>Secondary</u>	<u>Federal</u>	<u>Total</u>
<b>100 <u>Personnel Services – Salaries</u></b>				
100 Personnel Services – Salaries	607,319.23	696,783.39		1,304,102.62
<b>Total Personnel Services – Salaries</b>	<b>\$607,319.23</b>	<b>\$696,783.39</b>		<b>\$1,304,102.62</b>
<b>200 <u>Personnel Services – Employee Benefits</u></b>				
210 Group Insurance – Contracted Provider	267,201.18	222,345.28		489,546.46
220 Social Security Contributions	45,595.38	52,225.81		97,821.19
230 PSERS Retirement Contributions	203,382.98	236,838.41		440,221.39
260 Workers' Compensation	3,036.74	3,484.10		6,520.84
<b>Total Personnel Services – Employee Benefits</b>	<b>\$519,216.28</b>	<b>\$514,893.60</b>		<b>\$1,034,109.88</b>
<b>300 <u>Purchased Professional and Technical Services</u></b>				
322 Professional Educational Services – Ius	13,806.65			13,806.65
329 Professional Educational Services – Other	6,192.00	1,962.00		8,154.00
<b>Total Purchased Professional and Technical Services</b>	<b>\$19,998.65</b>	<b>\$1,962.00</b>		<b>\$21,960.65</b>
<b>500 <u>Other Purchased Services</u></b>				
580 Travel		20.10		20.10
<b>Total Other Purchased Services</b>		<b>\$20.10</b>		<b>\$20.10</b>
<b>600 <u>Supplies</u></b>				
610 General Supplies	5,845.18	5,528.00		11,373.18
<b>Total Supplies</b>	<b>\$5,845.18</b>	<b>\$5,528.00</b>		<b>\$11,373.18</b>
<b>Total 1240 Academic Support</b>	<b>\$1,152,379.34</b>	<b>\$1,219,187.09</b>		<b>\$2,371,566.43</b>

LEA : 129545003     North Schuylkill SD

Printed 3/6/2025 1:32:08 PM

General Fund (10)

1241 Learning Support – Public	<u>Elementary</u>	<u>Secondary</u>	<u>Federal</u>	<u>Total</u>
<b>100 <u>Personnel Services – Salaries</u></b>				
100 Personnel Services – Salaries	607,319.23	632,158.39		1,239,477.62
<b>Total Personnel Services – Salaries</b>	<b>\$607,319.23</b>	<b>\$632,158.39</b>		<b>\$1,239,477.62</b>
<b>200 <u>Personnel Services – Employee Benefits</u></b>				
210 Group Insurance – Contracted Provider	267,201.18	210,976.48		478,177.66
220 Social Security Contributions	45,595.38	47,352.13		92,947.51
230 PSERS Retirement Contributions	203,382.98	214,865.86		418,248.84
260 Workers' Compensation	3,036.74	3,160.92		6,197.66
<b>Total Personnel Services – Employee Benefits</b>	<b>\$519,216.28</b>	<b>\$476,355.39</b>		<b>\$995,571.67</b>
<b>300 <u>Purchased Professional and Technical Services</u></b>				
322 Professional Educational Services – Ius	13,806.65			13,806.65
329 Professional Educational Services – Other	6,192.00	1,962.00		8,154.00
<b>Total Purchased Professional and Technical Services</b>	<b>\$19,998.65</b>	<b>\$1,962.00</b>		<b>\$21,960.65</b>
<b>500 <u>Other Purchased Services</u></b>				
580 Travel		20.10		20.10
<b>Total Other Purchased Services</b>		<b>\$20.10</b>		<b>\$20.10</b>
<b>600 <u>Supplies</u></b>				
610 General Supplies	5,515.18	5,198.00		10,713.18
<b>Total Supplies</b>	<b>\$5,515.18</b>	<b>\$5,198.00</b>		<b>\$10,713.18</b>
<b>Total 1241 Learning Support – Public</b>	<b>\$1,152,049.34</b>	<b>\$1,115,693.88</b>		<b>\$2,267,743.22</b>

LEA : 129545003     North Schuylkill SD

Printed 3/6/2025 1:32:08 PM

General Fund (10)

1243 Gifted Support

	<u>Elementary</u>	<u>Secondary</u>	<u>Federal</u>	<u>Total</u>
<b>100 <u>Personnel Services – Salaries</u></b>				
100 Personnel Services – Salaries		64,625.00		64,625.00
<b>Total Personnel Services – Salaries</b>		<b>\$64,625.00</b>		<b>\$64,625.00</b>
<b>200 <u>Personnel Services – Employee Benefits</u></b>				
210 Group Insurance – Contracted Provider		11,368.80		11,368.80
220 Social Security Contributions		4,873.68		4,873.68
230 PSERS Retirement Contributions		21,972.55		21,972.55
260 Workers' Compensation		323.18		323.18
<b>Total Personnel Services – Employee Benefits</b>		<b>\$38,538.21</b>		<b>\$38,538.21</b>
<b>600 <u>Supplies</u></b>				
610 General Supplies	330.00	330.00		660.00
<b>Total Supplies</b>	<b>\$330.00</b>	<b>\$330.00</b>		<b>\$660.00</b>
<b>Total 1243 Gifted Support</b>	<b>\$330.00</b>	<b>\$103,493.21</b>		<b>\$103,823.21</b>

LEA : 129545003     North Schuylkill SD

Printed 3/6/2025 1:32:08 PM

General Fund (10)

1270 Multi-Handicapped Support	<u>Elementary</u>	<u>Secondary</u>	<u>Federal</u>	<u>Total</u>
300 <u>Purchased Professional and Technical Services</u>				
322 Professional Educational Services – lus	5,157.01	18,328.94	63,642.59	87,128.54
Total Purchased Professional and Technical Services	\$5,157.01	\$18,328.94	\$63,642.59	\$87,128.54
600 <u>Supplies</u>				
610 General Supplies	64.00			64.00
Total Supplies	\$64.00			\$64.00
Total 1270 Multi-Handicapped Support	\$5,221.01	\$18,328.94	\$63,642.59	\$87,192.54

LEA : 129545003     North Schuylkill SD

Printed 3/6/2025 1:32:08 PM

General Fund (10)

1290 Special Programs - Other Support

500 Other Purchased Services

	<u>Elementary</u>	<u>Secondary</u>	<u>Federal</u>	<u>Total</u>
594 IU Payment By Withholding for Institutionalized Children's Programs – Special Classes		340.44		340.44
<b>Total Other Purchased Services</b>		<b>\$340.44</b>		<b>\$340.44</b>
<b>Total 1290 Special Programs - Other Support</b>		<b>\$340.44</b>		<b>\$340.44</b>

LEA : 129545003     North Schuylkill SD

Printed 3/6/2025 1:32:08 PM

General Fund (10)

1300 Vocational Education

500 Other Purchased Services

	<u>Elementary</u>	<u>Secondary</u>	<u>Federal</u>	<u>Total</u>
564 Tuition To Career and Technology Centers		735,101.48		735,101.48
Total Other Purchased Services		\$735,101.48		\$735,101.48
Total 1300 Vocational Education		\$735,101.48		\$735,101.48



LEA : 129545003     North Schuylkill SD

Printed 3/6/2025 1:32:08 PM

General Fund (10)

1400 Other Instructional Programs – Elementary / Secondary	<u>Elementary</u>	<u>Secondary</u>	<u>Federal</u>	<u>Total</u>
<b>100 <u>Personnel Services – Salaries</u></b>				
100 Personnel Services – Salaries	31,674.78	18,070.80		49,745.58
<b>Total Personnel Services – Salaries</b>	<b>\$31,674.78</b>	<b>\$18,070.80</b>		<b>\$49,745.58</b>
<b>200 <u>Personnel Services – Employee Benefits</u></b>				
220 Social Security Contributions	2,380.19	1,351.68		3,731.87
230 PSERS Retirement Contributions	10,703.02	6,144.12		16,847.14
260 Workers’ Compensation	158.47	90.46		248.93
<b>Total Personnel Services – Employee Benefits</b>	<b>\$13,241.68</b>	<b>\$7,586.26</b>		<b>\$20,827.94</b>
<b>500 <u>Other Purchased Services</u></b>				
510 Student Transportation Services	3,093.11			3,093.11
561 Tuition To Other School Districts Within the State	75,896.71	375,570.34		451,467.05
<b>Total Other Purchased Services</b>	<b>\$78,989.82</b>	<b>\$375,570.34</b>		<b>\$454,560.16</b>
<b>600 <u>Supplies</u></b>				
610 General Supplies	2,558.29			2,558.29
630 Food	154.93			154.93
<b>Total Supplies</b>	<b>\$2,713.22</b>			<b>\$2,713.22</b>
<b>Total 1400 Other Instructional Programs – Elementary / Secondary</b>	<b>\$126,619.50</b>	<b>\$401,227.40</b>		<b>\$527,846.90</b>

LEA : 129545003     North Schuylkill SD

Printed 3/6/2025 1:32:08 PM

General Fund (10)

1430 Homebound Instruction	<u>Elementary</u>	<u>Secondary</u>	<u>Federal</u>	<u>Total</u>
<b>100 <u>Personnel Services – Salaries</u></b>				
100 Personnel Services – Salaries	700.00	1,295.00		1,995.00
<b>Total Personnel Services – Salaries</b>	<b>\$700.00</b>	<b>\$1,295.00</b>		<b>\$1,995.00</b>
<b>200 <u>Personnel Services – Employee Benefits</u></b>				
220 Social Security Contributions	51.64	96.06		147.70
230 PSERS Retirement Contributions	238.00	440.30		678.30
260 Workers’ Compensation	3.50	6.49		9.99
<b>Total Personnel Services – Employee Benefits</b>	<b>\$293.14</b>	<b>\$542.85</b>		<b>\$835.99</b>
<b>Total 1430 Homebound Instruction</b>	<b>\$993.14</b>	<b>\$1,837.85</b>		<b>\$2,830.99</b>

LEA : 129545003     North Schuylkill SD

Printed 3/6/2025 1:32:08 PM

General Fund (10)

1440 Alternative Regular Education Programs	<u>Elementary</u>	<u>Secondary</u>	<u>Federal</u>	<u>Total</u>
500 <u>Other Purchased Services</u>				
561 Tuition To Other School Districts Within the State	75,896.71	375,570.34		451,467.05
Total Other Purchased Services	\$75,896.71	\$375,570.34		\$451,467.05
Total 1440 Alternative Regular Education Programs	\$75,896.71	\$375,570.34		\$451,467.05

LEA : 129545003     North Schuylkill SD

Printed 3/6/2025 1:32:08 PM

General Fund (10)

1441 Adjudicated / Court-Placed Programs	<u>Elementary</u>	<u>Secondary</u>	<u>Federal</u>	<u>Total</u>
500 <u>Other Purchased Services</u>				
561 Tuition To Other School Districts Within the State	467.34	44,485.49		44,952.83
Total Other Purchased Services	\$467.34	\$44,485.49		\$44,952.83
Total 1441 Adjudicated / Court-Placed Programs	\$467.34	\$44,485.49		\$44,952.83

LEA : 129545003     North Schuylkill SD

Printed 3/6/2025 1:32:08 PM

General Fund (10)

1442 Alternative Education Programs	<u>Elementary</u>	<u>Secondary</u>	<u>Federal</u>	<u>Total</u>
500 <u>Other Purchased Services</u>				
561 Tuition To Other School Districts Within the State	75,429.37	331,084.85		406,514.22
Total Other Purchased Services	\$75,429.37	\$331,084.85		\$406,514.22
Total 1442 Alternative Education Programs	\$75,429.37	\$331,084.85		\$406,514.22

LEA : 129545003     North Schuylkill SD

Printed 3/6/2025 1:32:08 PM

General Fund (10)

1450 Instructional Programs Outside the Established School Day	<u>Elementary</u>	<u>Secondary</u>	<u>Federal</u>	<u>Total</u>
100 <u>Personnel Services – Salaries</u>				
100 Personnel Services – Salaries	30,974.78	16,775.80		47,750.58
Total Personnel Services – Salaries	\$30,974.78	\$16,775.80		\$47,750.58
200 <u>Personnel Services – Employee Benefits</u>				
220 Social Security Contributions	2,328.55	1,255.62		3,584.17
230 PSERS Retirement Contributions	10,465.02	5,703.82		16,168.84
260 Workers’ Compensation	154.97	83.97		238.94
Total Personnel Services – Employee Benefits	\$12,948.54	\$7,043.41		\$19,991.95
500 <u>Other Purchased Services</u>				
510 Student Transportation Services	3,093.11			3,093.11
Total Other Purchased Services	\$3,093.11			\$3,093.11
600 <u>Supplies</u>				
610 General Supplies	2,558.29			2,558.29
630 Food	154.93			154.93
Total Supplies	\$2,713.22			\$2,713.22
Total 1450 Instructional Programs Outside the Established School Day	\$49,729.65	\$23,819.21		\$73,548.86

LEA : 129545003     North Schuylkill SD

Printed 3/6/2025 1:32:12 PM

General Fund (10)

2000 Support Services

Total

100	<u>Personnel Services – Salaries</u>	
100	Personnel Services – Salaries	4,049,581.25
Total Personnel Services – Salaries		\$4,049,581.25
200	<u>Personnel Services – Employee Benefits</u>	
210	Group Insurance – Contracted Provider	1,483,702.40
220	Social Security Contributions	305,310.90
230	PSERS Retirement Contributions	1,349,972.40
240	Tuition Reimbursement	30,403.00
260	Workers' Compensation	17,734.67
291	Other Retirement Plans	28,183.90
299	All Other Employee Benefits	6,514.00
Total Personnel Services – Employee Benefits		\$3,221,821.27
300	<u>Purchased Professional and Technical Services</u>	
329	Professional Educational Services – Other	5,859.98
330	Other Professional Services	282,928.56
340	Technical Services	71,515.64
390	Other Purchased Professional and Technical Services	45,292.70
Total Purchased Professional and Technical Services		\$405,596.88
400	<u>Purchased Property Services</u>	
410	Cleaning Services	22,070.02
420	Utility Services	387,145.50
430	Repairs and Maintenance Services	202,401.06
440	Rentals	26,648.57
460	Extermination Services	3,351.56
490	Other Purchased Property Services	66,047.00
Total Purchased Property Services		\$707,663.71
500	<u>Other Purchased Services</u>	
510	Student Transportation Services	307.82
513	Contracted Carriers	2,253,845.52
516	Student Transportation Services From the IU	2,261.10
520	Insurance – General	16,017.00
523	General Property and Liability Insurance	80,868.85
530	Communications	40,694.29
549	Other Advertising/Public Relations	9,464.65
550	Printing and Binding	14,498.29
580	Travel	4,120.00
Total Other Purchased Services		\$2,422,077.52
600	<u>Supplies</u>	
610	General Supplies	312,851.41
620	Energy	163,078.21
630	Food	12,552.53
640	Books and Periodicals	47,686.47
Total Supplies		\$536,168.62

LEA : 129545003     North Schuylkill SD

Printed 3/6/2025 1:32:12 PM

General Fund (10)

2000 Support Services

Total

700 Property

752 Capital Equipment – Original and Additional	4,499.65
---	----------

<b>Total Property</b>	<b>\$4,499.65</b>
-----------------------	-------------------

800 Other Objects

810 Dues and Fees	26,473.96
-------------------	-----------

820 Claims and Judgments Against the LEA	12,105.00
--	-----------

<b>Total Other Objects</b>	<b>\$38,578.96</b>
----------------------------	--------------------

<b>Total 2000 Support Services</b>	<b>\$11,385,987.86</b>
------------------------------------	------------------------



LEA : 129545003 North Schuylkill SD

Printed 3/6/2025 1:32:12 PM

General Fund (10)

2100 Support Services – Students	Elementary	Secondary	Federal	Total
100 <u>Personnel Services – Salaries</u>				
100 Personnel Services – Salaries	145,659.28	299,984.33		764,421.70
<b>Total Personnel Services – Salaries</b>	<b>\$145,659.28</b>	<b>\$299,984.33</b>		<b>\$764,421.70</b>
200 <u>Personnel Services – Employee Benefits</u>				
210 Group Insurance – Contracted Provider	46,554.90	91,024.18		215,021.43
220 Social Security Contributions	10,962.95	23,132.11		58,678.87
230 PSERS Retirement Contributions	49,524.24	101,994.81		259,869.62
260 Workers' Compensation	728.38	1,533.10		3,888.53
291 Other Retirement Plans		10,000.00		10,000.00
<b>Total Personnel Services – Employee Benefits</b>	<b>\$107,770.47</b>	<b>\$227,684.20</b>		<b>\$547,458.45</b>
300 <u>Purchased Professional and Technical Services</u>				
329 Professional Educational Services – Other	485.98			735.98
330 Other Professional Services				88,561.00
340 Technical Services				10,588.94
390 Other Purchased Professional and Technical Services		6,771.12		7,441.12
<b>Total Purchased Professional and Technical Services</b>	<b>\$485.98</b>	<b>\$6,771.12</b>		<b>\$107,327.04</b>
500 <u>Other Purchased Services</u>				
510 Student Transportation Services		307.82		307.82
530 Communications	25.89	374.84		400.73
580 Travel		116.97		1,856.06
<b>Total Other Purchased Services</b>	<b>\$25.89</b>	<b>\$799.63</b>		<b>\$2,564.61</b>
600 <u>Supplies</u>				
610 General Supplies	2,243.01	6,441.61		12,196.70
640 Books and Periodicals	295.00			295.00
<b>Total Supplies</b>	<b>\$2,538.01</b>	<b>\$6,441.61</b>		<b>\$12,491.70</b>
800 <u>Other Objects</u>				
810 Dues and Fees		230.00		645.00
<b>Total Other Objects</b>		<b>\$230.00</b>		<b>\$645.00</b>
<b>Total 2100 Support Services – Students</b>	<b>\$256,479.63</b>	<b>\$541,910.89</b>		<b>\$1,434,908.50</b>

LEA : 129545003     North Schuylkill SD

Printed 3/6/2025 1:32:12 PM

General Fund (10)

2120 Guidance Services	Elementary	Secondary	Federal	Total
100 <u>Personnel Services – Salaries</u>				
100 Personnel Services – Salaries	73,859.15	228,184.20		302,043.35
<b>Total Personnel Services – Salaries</b>	<b>\$73,859.15</b>	<b>\$228,184.20</b>		<b>\$302,043.35</b>
200 <u>Personnel Services – Employee Benefits</u>				
210 Group Insurance – Contracted Provider	27,846.72	72,316.36		100,163.08
220 Social Security Contributions	5,546.97	17,716.21		23,263.18
230 PSERS Retirement Contributions	25,112.23	77,582.80		102,695.03
260 Workers' Compensation	369.33	1,174.05		1,543.38
291 Other Retirement Plans		10,000.00		10,000.00
<b>Total Personnel Services – Employee Benefits</b>	<b>\$58,875.25</b>	<b>\$178,789.42</b>		<b>\$237,664.67</b>
300 <u>Purchased Professional and Technical Services</u>				
329 Professional Educational Services – Other	485.98			485.98
390 Other Purchased Professional and Technical Services		6,771.12		6,771.12
<b>Total Purchased Professional and Technical Services</b>	<b>\$485.98</b>	<b>\$6,771.12</b>		<b>\$7,257.10</b>
500 <u>Other Purchased Services</u>				
510 Student Transportation Services		307.82		307.82
530 Communications	25.60	320.26		345.86
580 Travel		91.25		91.25
<b>Total Other Purchased Services</b>	<b>\$25.60</b>	<b>\$719.33</b>		<b>\$744.93</b>
600 <u>Supplies</u>				
610 General Supplies	566.02	739.97		1,305.99
640 Books and Periodicals	295.00			295.00
<b>Total Supplies</b>	<b>\$861.02</b>	<b>\$739.97</b>		<b>\$1,600.99</b>
<b>Total 2120 Guidance Services</b>	<b>\$134,107.00</b>	<b>\$415,204.04</b>		<b>\$549,311.04</b>

LEA : 129545003     North Schuylkill SD

Printed 3/6/2025 1:32:12 PM

General Fund (10)

2140 Psychological Services	Elementary	Secondary	Federal	Total
100 <u>Personnel Services – Salaries</u>				
100 Personnel Services – Salaries	71,800.13	71,800.13		143,600.26
<b>Total Personnel Services – Salaries</b>	<b>\$71,800.13</b>	<b>\$71,800.13</b>		<b>\$143,600.26</b>
200 <u>Personnel Services – Employee Benefits</u>				
210 Group Insurance – Contracted Provider	18,708.18	18,707.82		37,416.00
220 Social Security Contributions	5,415.98	5,415.90		10,831.88
230 PSERS Retirement Contributions	24,412.01	24,412.01		48,824.02
260 Workers' Compensation	359.05	359.05		718.10
<b>Total Personnel Services – Employee Benefits</b>	<b>\$48,895.22</b>	<b>\$48,894.78</b>		<b>\$97,790.00</b>
500 <u>Other Purchased Services</u>				
530 Communications	0.29	54.58		54.87
580 Travel		25.72		25.72
<b>Total Other Purchased Services</b>	<b>\$0.29</b>	<b>\$80.30</b>		<b>\$80.59</b>
600 <u>Supplies</u>				
610 General Supplies	1,676.99	5,701.64		7,378.63
<b>Total Supplies</b>	<b>\$1,676.99</b>	<b>\$5,701.64</b>		<b>\$7,378.63</b>
800 <u>Other Objects</u>				
810 Dues and Fees		230.00		230.00
<b>Total Other Objects</b>		<b>\$230.00</b>		<b>\$230.00</b>
<b>Total 2140 Psychological Services</b>	<b>\$122,372.63</b>	<b>\$126,706.85</b>		<b>\$249,079.48</b>

LEA : 129545003     North Schuylkill SD

Printed 3/6/2025 1:32:12 PM

General Fund (10)				
2160 Social Work Services	<u>Elementary</u>	<u>Secondary</u>	<u>Federal</u>	<u>Total</u>
100 <u>Personnel Services – Salaries</u>				
100 Personnel Services – Salaries				263,980.05
Total Personnel Services – Salaries				\$263,980.05
200 <u>Personnel Services – Employee Benefits</u>				
210 Group Insurance – Contracted Provider				44,515.52
220 Social Security Contributions				20,533.38
230 PSERS Retirement Contributions				89,753.13
260 Workers' Compensation				1,353.13
Total Personnel Services – Employee Benefits				\$156,155.16
300 <u>Purchased Professional and Technical Services</u>				
329 Professional Educational Services – Other				250.00
330 Other Professional Services				88,561.00
Total Purchased Professional and Technical Services				\$88,811.00
500 <u>Other Purchased Services</u>				
580 Travel				998.08
Total Other Purchased Services				\$998.08
600 <u>Supplies</u>				
610 General Supplies				3,428.75
Total Supplies				\$3,428.75
Total 2160 Social Work Services				\$513,373.04

LEA : 129545003     North Schuylkill SD

Printed 3/6/2025 1:32:12 PM

General Fund (10)				
2170 Student Accounting Services	<u>Elementary</u>	<u>Secondary</u>	<u>Federal</u>	<u>Total</u>
100 <u>Personnel Services – Salaries</u>				
100 Personnel Services – Salaries				54,798.04
Total Personnel Services – Salaries				\$54,798.04
200 <u>Personnel Services – Employee Benefits</u>				
210 Group Insurance – Contracted Provider				32,926.83
220 Social Security Contributions				4,050.43
230 PSERS Retirement Contributions				18,597.44
260 Workers' Compensation				273.92
Total Personnel Services – Employee Benefits				\$55,848.62
300 <u>Purchased Professional and Technical Services</u>				
340 Technical Services				10,588.94
390 Other Purchased Professional and Technical Services				670.00
Total Purchased Professional and Technical Services				\$11,258.94
500 <u>Other Purchased Services</u>				
580 Travel				741.01
Total Other Purchased Services				\$741.01
600 <u>Supplies</u>				
610 General Supplies				83.33
Total Supplies				\$83.33
800 <u>Other Objects</u>				
810 Dues and Fees				415.00
Total Other Objects				\$415.00
Total 2170 Student Accounting Services				\$123,144.94

LEA : 129545003     North Schuylkill SD

Printed 3/6/2025 1:32:12 PM

General Fund (10)

2200 Support Services – Instructional Staff	Elementary	Secondary	Federal	Total
<b>100 <u>Personnel Services – Salaries</u></b>				
100 Personnel Services – Salaries	93,155.20	234,071.76		327,226.96
<b>Total Personnel Services – Salaries</b>	<b>\$93,155.20</b>	<b>\$234,071.76</b>		<b>\$327,226.96</b>
<b>200 <u>Personnel Services – Employee Benefits</u></b>				
210 Group Insurance – Contracted Provider	27,510.35	92,713.54		120,223.89
220 Social Security Contributions	7,007.42	17,964.16		24,971.58
230 PSERS Retirement Contributions	31,670.28	79,096.02		110,766.30
240 Tuition Reimbursement	17,638.00	12,765.00		30,403.00
260 Workers' Compensation	465.88	1,170.38		1,636.26
<b>Total Personnel Services – Employee Benefits</b>	<b>\$84,291.93</b>	<b>\$203,709.10</b>		<b>\$288,001.03</b>
<b>300 <u>Purchased Professional and Technical Services</u></b>				
329 Professional Educational Services – Other	550.00	550.00		1,100.00
<b>Total Purchased Professional and Technical Services</b>	<b>\$550.00</b>	<b>\$550.00</b>		<b>\$1,100.00</b>
<b>400 <u>Purchased Property Services</u></b>				
440 Rentals	24.05	4,601.48		4,625.53
<b>Total Purchased Property Services</b>	<b>\$24.05</b>	<b>\$4,601.48</b>		<b>\$4,625.53</b>
<b>500 <u>Other Purchased Services</u></b>				
530 Communications	13.58	2,597.54		2,611.12
580 Travel	7.27	1,390.54		1,397.81
<b>Total Other Purchased Services</b>	<b>\$20.85</b>	<b>\$3,988.08</b>		<b>\$4,008.93</b>
<b>600 <u>Supplies</u></b>				
610 General Supplies	8,091.49	2,929.76		11,021.25
630 Food	2.02	387.05		389.07
640 Books and Periodicals	593.82	325.00		918.82
<b>Total Supplies</b>	<b>\$8,687.33</b>	<b>\$3,641.81</b>		<b>\$12,329.14</b>
<b>800 <u>Other Objects</u></b>				
810 Dues and Fees	1,205.53	2,448.43		3,653.96
<b>Total Other Objects</b>	<b>\$1,205.53</b>	<b>\$2,448.43</b>		<b>\$3,653.96</b>
<b>Total 2200 Support Services – Instructional Staff</b>	<b>\$187,934.89</b>	<b>\$453,010.66</b>		<b>\$640,945.55</b>

LEA : 129545003     North Schuylkill SD

Printed 3/6/2025 1:32:12 PM

General Fund (10)

2250 School Library Services	<u>Elementary</u>	<u>Secondary</u>	<u>Federal</u>	<u>Total</u>
<b>100 <u>Personnel Services – Salaries</u></b>				
100 Personnel Services – Salaries	91,931.67			91,931.67
<b>Total Personnel Services – Salaries</b>	<b>\$91,931.67</b>			<b>\$91,931.67</b>
<b>200 <u>Personnel Services – Employee Benefits</u></b>				
210 Group Insurance – Contracted Provider	27,047.60	4,186.96		31,234.56
220 Social Security Contributions	6,913.52			6,913.52
230 PSERS Retirement Contributions	31,256.83			31,256.83
260 Workers' Compensation	459.76			459.76
<b>Total Personnel Services – Employee Benefits</b>	<b>\$65,677.71</b>	<b>\$4,186.96</b>		<b>\$69,864.67</b>
<b>600 <u>Supplies</u></b>				
610 General Supplies	8,076.18			8,076.18
640 Books and Periodicals	593.82	325.00		918.82
<b>Total Supplies</b>	<b>\$8,670.00</b>	<b>\$325.00</b>		<b>\$8,995.00</b>
<b>800 <u>Other Objects</u></b>				
810 Dues and Fees	1,199.00	1,199.00		2,398.00
<b>Total Other Objects</b>	<b>\$1,199.00</b>	<b>\$1,199.00</b>		<b>\$2,398.00</b>
<b>Total 2250 School Library Services</b>	<b>\$167,478.38</b>	<b>\$5,710.96</b>		<b>\$173,189.34</b>

LEA : 129545003     North Schuylkill SD

Printed 3/6/2025 1:32:12 PM

General Fund (10)

2260 Instruction and Curriculum Development Services	Elementary	Secondary	Federal	Total
<b>100 <u>Personnel Services – Salaries</u></b>				
100 Personnel Services – Salaries	1,223.53	234,071.76		235,295.29
<b>Total Personnel Services – Salaries</b>	<b>\$1,223.53</b>	<b>\$234,071.76</b>		<b>\$235,295.29</b>
<b>200 <u>Personnel Services – Employee Benefits</u></b>				
210 Group Insurance – Contracted Provider	462.75	88,526.58		88,989.33
220 Social Security Contributions	93.90	17,964.16		18,058.06
230 PSERS Retirement Contributions	413.45	79,096.02		79,509.47
260 Workers' Compensation	6.12	1,170.38		1,176.50
<b>Total Personnel Services – Employee Benefits</b>	<b>\$976.22</b>	<b>\$186,757.14</b>		<b>\$187,733.36</b>
<b>300 <u>Purchased Professional and Technical Services</u></b>				
329 Professional Educational Services – Other	550.00	550.00		1,100.00
<b>Total Purchased Professional and Technical Services</b>	<b>\$550.00</b>	<b>\$550.00</b>		<b>\$1,100.00</b>
<b>400 <u>Purchased Property Services</u></b>				
440 Rentals	24.05	4,601.48		4,625.53
<b>Total Purchased Property Services</b>	<b>\$24.05</b>	<b>\$4,601.48</b>		<b>\$4,625.53</b>
<b>500 <u>Other Purchased Services</u></b>				
530 Communications	13.58	2,597.54		2,611.12
580 Travel	7.27	1,390.54		1,397.81
<b>Total Other Purchased Services</b>	<b>\$20.85</b>	<b>\$3,988.08</b>		<b>\$4,008.93</b>
<b>600 <u>Supplies</u></b>				
610 General Supplies	15.31	2,929.76		2,945.07
630 Food	2.02	387.05		389.07
<b>Total Supplies</b>	<b>\$17.33</b>	<b>\$3,316.81</b>		<b>\$3,334.14</b>
<b>800 <u>Other Objects</u></b>				
810 Dues and Fees	6.53	1,249.43		1,255.96
<b>Total Other Objects</b>	<b>\$6.53</b>	<b>\$1,249.43</b>		<b>\$1,255.96</b>
<b>Total 2260 Instruction and Curriculum Development Services</b>	<b>\$2,818.51</b>	<b>\$434,534.70</b>		<b>\$437,353.21</b>



LEA : 129545003     North Schuylkill SD

Printed 3/6/2025 1:32:12 PM

General Fund (10)

2270 Instructional Staff Professional Development Services	<u>Elementary</u>	<u>Secondary</u>	<u>Federal</u>	<u>Total</u>
200 <u>Personnel Services – Employee Benefits</u>				
240 Tuition Reimbursement	17,638.00	12,765.00		30,403.00
Total Personnel Services – Employee Benefits	\$17,638.00	\$12,765.00		\$30,403.00
Total 2270 Instructional Staff Professional Development Services	\$17,638.00	\$12,765.00		\$30,403.00

LEA : 129545003     North Schuylkill SD

Printed 3/6/2025 1:32:12 PM

General Fund (10)

2300 Support Services – Administration	Elementary	Secondary	Federal	Total
<b>100 <u>Personnel Services – Salaries</u></b>				
100 Personnel Services – Salaries	311,398.28	358,363.88		947,748.55
<b>Total Personnel Services – Salaries</b>	<b>\$311,398.28</b>	<b>\$358,363.88</b>		<b>\$947,748.55</b>
<b>200 <u>Personnel Services – Employee Benefits</u></b>				
210 Group Insurance – Contracted Provider	64,944.72	145,100.72		295,264.49
220 Social Security Contributions	23,775.79	26,108.96		71,175.67
230 PSERS Retirement Contributions	102,940.38	115,315.03		299,270.59
260 Workers' Compensation	1,557.03	1,714.65		4,469.04
291 Other Retirement Plans	10,000.00			10,000.00
<b>Total Personnel Services – Employee Benefits</b>	<b>\$203,217.92</b>	<b>\$288,239.36</b>		<b>\$680,179.79</b>
<b>300 <u>Purchased Professional and Technical Services</u></b>				
329 Professional Educational Services – Other		4,024.00		4,024.00
330 Other Professional Services				192,463.56
340 Technical Services	11,263.07	11,263.07		25,001.66
<b>Total Purchased Professional and Technical Services</b>	<b>\$11,263.07</b>	<b>\$15,287.07</b>		<b>\$221,489.22</b>
<b>400 <u>Purchased Property Services</u></b>				
440 Rentals	2,496.62	2,514.14		12,894.94
<b>Total Purchased Property Services</b>	<b>\$2,496.62</b>	<b>\$2,514.14</b>		<b>\$12,894.94</b>
<b>500 <u>Other Purchased Services</u></b>				
520 Insurance – General				533.00
530 Communications	1,971.18	8,916.91		14,932.06
549 Other Advertising/Public Relations				9,464.65
550 Printing and Binding				14,498.29
580 Travel		615.57		820.57
<b>Total Other Purchased Services</b>	<b>\$1,971.18</b>	<b>\$9,532.48</b>		<b>\$40,248.57</b>
<b>600 <u>Supplies</u></b>				
610 General Supplies	9,160.05	25,315.30		48,043.96
630 Food	4,243.38	6,108.28		12,135.23
<b>Total Supplies</b>	<b>\$13,403.43</b>	<b>\$31,423.58</b>		<b>\$60,179.19</b>
<b>800 <u>Other Objects</u></b>				
810 Dues and Fees	605.00	578.20		17,121.00
820 Claims and Judgments Against the LEA				12,105.00
<b>Total Other Objects</b>	<b>\$605.00</b>	<b>\$578.20</b>		<b>\$29,226.00</b>
<b>Total 2300 Support Services – Administration</b>	<b>\$544,355.50</b>	<b>\$705,938.71</b>		<b>\$1,991,966.26</b>

LEA : 129545003     North Schuylkill SD

Printed 3/6/2025 1:32:12 PM

General Fund (10)				
2310 Board Services				
	<u>Elementary</u>	<u>Secondary</u>	<u>Federal</u>	<u>Total</u>
100 <u>Personnel Services – Salaries</u>				
100 Personnel Services – Salaries				2,499.96
Total Personnel Services – Salaries				\$2,499.96
200 <u>Personnel Services – Employee Benefits</u>				
220 Social Security Contributions				181.37
230 PSERS Retirement Contributions				849.96
260 Workers’ Compensation				12.48
Total Personnel Services – Employee Benefits				\$1,043.81
500 <u>Other Purchased Services</u>				
520 Insurance – General				533.00
549 Other Advertising/Public Relations				9,464.65
Total Other Purchased Services				\$9,997.65
600 <u>Supplies</u>				
610 General Supplies				9,039.94
630 Food				154.72
Total Supplies				\$9,194.66
800 <u>Other Objects</u>				
810 Dues and Fees				10,013.45
820 Claims and Judgments Against the LEA				12,105.00
Total Other Objects				\$22,118.45
Total 2310 Board Services				\$44,854.53

LEA : 129545003     North Schuylkill SD

Printed 3/6/2025 1:32:12 PM

General Fund (10)

2330 Tax Assessment and Collection Services	<u>Elementary</u>	<u>Secondary</u>	<u>Federal</u>	<u>Total</u>
100 <u>Personnel Services – Salaries</u>				
100 Personnel Services – Salaries				38,499.00
Total Personnel Services – Salaries				\$38,499.00
200 <u>Personnel Services – Employee Benefits</u>				
220 Social Security Contributions				2,945.16
Total Personnel Services – Employee Benefits				\$2,945.16
300 <u>Purchased Professional and Technical Services</u>				
330 Other Professional Services				75,583.18
340 Technical Services				2,475.52
Total Purchased Professional and Technical Services				\$78,058.70
500 <u>Other Purchased Services</u>				
530 Communications				4,043.97
550 Printing and Binding				9,058.29
Total Other Purchased Services				\$13,102.26
600 <u>Supplies</u>				
610 General Supplies				879.00
Total Supplies				\$879.00
800 <u>Other Objects</u>				
810 Dues and Fees				621.32
Total Other Objects				\$621.32
Total 2330 Tax Assessment and Collection Services				\$134,105.44

LEA : 129545003     North Schuylkill SD

Printed 3/6/2025 1:32:12 PM

General Fund (10)

2350 Legal and Accounting Services

Elementary

Secondary

Federal

Total

300 Purchased Professional and Technical Services

330 Other Professional Services

64,301.00

Total Purchased Professional and Technical Services				\$64,301.00
Total 2350 Legal and Accounting Services				\$64,301.00

LEA : 129545003     North Schuylkill SD

Printed 3/6/2025 1:32:12 PM

General Fund (10)

2360 Office of the Superintendent / Executive Director Services	<u>Elementary</u>	<u>Secondary</u>	<u>Federal</u>	<u>Total</u>
100 <u>Personnel Services – Salaries</u>				
100 Personnel Services – Salaries				216,593.91
Total Personnel Services – Salaries				\$216,593.91
200 <u>Personnel Services – Employee Benefits</u>				
210 Group Insurance – Contracted Provider				82,356.00
220 Social Security Contributions				16,621.04
230 PSERS Retirement Contributions				73,231.32
260 Workers' Compensation				1,082.96
Total Personnel Services – Employee Benefits				\$173,291.32
400 <u>Purchased Property Services</u>				
440 Rentals				7,884.18
Total Purchased Property Services				\$7,884.18
500 <u>Other Purchased Services</u>				
530 Communications	3.38	645.85		649.23
580 Travel				205.00
Total Other Purchased Services	\$3.38	\$645.85		\$854.23
600 <u>Supplies</u>				
610 General Supplies				3,649.67
630 Food				1,628.85
Total Supplies				\$5,278.52
800 <u>Other Objects</u>				
810 Dues and Fees				5,303.03
Total Other Objects				\$5,303.03
Total 2360 Office of the Superintendent / Executive Director Services	\$3.38	\$645.85		\$409,205.19

LEA : 129545003     North Schuylkill SD

Printed 3/6/2025 1:32:12 PM

General Fund (10)

2370 Community Relations Services	<u>Elementary</u>	<u>Secondary</u>	<u>Federal</u>	<u>Total</u>
100 <u>Personnel Services – Salaries</u>				
100 Personnel Services – Salaries				20,393.52
Total Personnel Services – Salaries				\$20,393.52
200 <u>Personnel Services – Employee Benefits</u>				
210 Group Insurance – Contracted Provider				2,863.05
220 Social Security Contributions				1,543.35
230 PSERS Retirement Contributions				6,933.90
260 Workers' Compensation				101.92
Total Personnel Services – Employee Benefits				\$11,442.22
500 <u>Other Purchased Services</u>				
550 Printing and Binding				5,440.00
Total Other Purchased Services				\$5,440.00
Total 2370 Community Relations Services				\$37,275.74

LEA : 129545003 North Schuylkill SD

Printed 3/6/2025 1:32:12 PM

General Fund (10)

2380 Office of the Principal Services	Elementary	Secondary	Federal	Total
100 <u>Personnel Services – Salaries</u>				
100 Personnel Services – Salaries	311,398.28	358,363.88		669,762.16
Total Personnel Services – Salaries	\$311,398.28	\$358,363.88		\$669,762.16
200 <u>Personnel Services – Employee Benefits</u>				
210 Group Insurance – Contracted Provider	64,944.72	145,100.72		210,045.44
220 Social Security Contributions	23,775.79	26,108.96		49,884.75
230 PSERS Retirement Contributions	102,940.38	115,315.03		218,255.41
260 Workers' Compensation	1,557.03	1,714.65		3,271.68
291 Other Retirement Plans	10,000.00			10,000.00
Total Personnel Services – Employee Benefits	\$203,217.92	\$288,239.36		\$491,457.28
300 <u>Purchased Professional and Technical Services</u>				
329 Professional Educational Services – Other		4,024.00		4,024.00
340 Technical Services	11,263.07	11,263.07		22,526.14
Total Purchased Professional and Technical Services	\$11,263.07	\$15,287.07		\$26,550.14
400 <u>Purchased Property Services</u>				
440 Rentals	2,496.62	2,514.14		5,010.76
Total Purchased Property Services	\$2,496.62	\$2,514.14		\$5,010.76
500 <u>Other Purchased Services</u>				
530 Communications	1,967.80	8,271.06		10,238.86
580 Travel		615.57		615.57
Total Other Purchased Services	\$1,967.80	\$8,886.63		\$10,854.43
600 <u>Supplies</u>				
610 General Supplies	9,160.05	25,315.30		34,475.35
630 Food	4,243.38	6,108.28		10,351.66
Total Supplies	\$13,403.43	\$31,423.58		\$44,827.01
800 <u>Other Objects</u>				
810 Dues and Fees	605.00	578.20		1,183.20
Total Other Objects	\$605.00	\$578.20		\$1,183.20
Total 2380 Office of the Principal Services	\$544,352.12	\$705,292.86		\$1,249,644.98



LEA : 129545003     North Schuylkill SD

Printed 3/6/2025 1:32:12 PM

General Fund (10)

2390 Other Administration Services	<u>Elementary</u>	<u>Secondary</u>	<u>Federal</u>	<u>Total</u>
300 <u>Purchased Professional and Technical Services</u>				
330 Other Professional Services				52,579.38
<b>Total Purchased Professional and Technical Services</b>				<b>\$52,579.38</b>
<b>Total 2390 Other Administration Services</b>				<b>\$52,579.38</b>

LEA : 129545003     North Schuylkill SD

Printed 3/6/2025 1:32:12 PM

General Fund (10)				
2400 Support Services – Pupil Health	<u>Elementary</u>	<u>Secondary</u>	<u>Federal</u>	<u>Total</u>
100 <u>Personnel Services – Salaries</u>				
100 Personnel Services – Salaries				334,710.75
Total Personnel Services – Salaries				\$334,710.75
200 <u>Personnel Services – Employee Benefits</u>				
210 Group Insurance – Contracted Provider				167,342.40
220 Social Security Contributions				25,016.72
230 PSERS Retirement Contributions				111,973.72
260 Workers' Compensation				1,673.67
299 All Other Employee Benefits				6,514.00
Total Personnel Services – Employee Benefits				\$312,520.51
300 <u>Purchased Professional and Technical Services</u>				
330 Other Professional Services				1,904.00
340 Technical Services				3,662.78
390 Other Purchased Professional and Technical Services				37,489.68
Total Purchased Professional and Technical Services				\$43,056.46
400 <u>Purchased Property Services</u>				
440 Rentals				566.40
Total Purchased Property Services				\$566.40
500 <u>Other Purchased Services</u>				
530 Communications				628.61
580 Travel				45.56
Total Other Purchased Services				\$674.17
600 <u>Supplies</u>				
610 General Supplies				6,373.38
Total Supplies				\$6,373.38
800 <u>Other Objects</u>				
810 Dues and Fees				165.00
Total Other Objects				\$165.00
Total 2400 Support Services – Pupil Health				\$698,066.67

LEA : 129545003     North Schuylkill SD

Printed 3/6/2025 1:32:12 PM

General Fund (10)

2410 Supervision of Health Services	<u>Elementary</u>	<u>Secondary</u>	<u>Federal</u>	<u>Total</u>
100 <u>Personnel Services – Salaries</u>				
100 Personnel Services – Salaries				113,801.30
Total Personnel Services – Salaries				\$113,801.30
200 <u>Personnel Services – Employee Benefits</u>				
210 Group Insurance – Contracted Provider				58,006.32
220 Social Security Contributions				6,903.79
230 PSERS Retirement Contributions				29,809.27
260 Workers' Compensation				974.66
299 All Other Employee Benefits				6,514.00
Total Personnel Services – Employee Benefits				\$102,208.04
300 <u>Purchased Professional and Technical Services</u>				
330 Other Professional Services				1,904.00
Total Purchased Professional and Technical Services				\$1,904.00
Total 2410 Supervision of Health Services				\$217,913.34

LEA : 129545003     North Schuylkill SD

Printed 3/6/2025 1:32:12 PM

General Fund (10)

2411 Supervision of Health Services – Head of Component	<u>Elementary</u>	<u>Secondary</u>	<u>Federal</u>	<u>Total</u>
100 <u>Personnel Services – Salaries</u>				
100 Personnel Services – Salaries				113,801.30
Total Personnel Services – Salaries				\$113,801.30
200 <u>Personnel Services – Employee Benefits</u>				
210 Group Insurance – Contracted Provider				58,006.32
220 Social Security Contributions				6,903.79
230 PSERS Retirement Contributions				29,809.27
260 Workers' Compensation				974.66
299 All Other Employee Benefits				6,514.00
Total Personnel Services – Employee Benefits				\$102,208.04
300 <u>Purchased Professional and Technical Services</u>				
330 Other Professional Services				1,904.00
Total Purchased Professional and Technical Services				\$1,904.00
Total 2411 Supervision of Health Services – Head of Component				\$217,913.34

LEA : 129545003      North Schuylkill SD

Printed 3/6/2025 1:32:12 PM

General Fund (10)				
2420 Medical Services	<u>Elementary</u>	<u>Secondary</u>	<u>Federal</u>	<u>Total</u>
100 <u>Personnel Services – Salaries</u>				
100 Personnel Services – Salaries				220,909.45
Total Personnel Services – Salaries				\$220,909.45
200 <u>Personnel Services – Employee Benefits</u>				
210 Group Insurance – Contracted Provider				109,336.08
220 Social Security Contributions				18,112.93
230 PSERS Retirement Contributions				82,164.45
260 Workers' Compensation				699.01
Total Personnel Services – Employee Benefits				\$210,312.47
300 <u>Purchased Professional and Technical Services</u>				
340 Technical Services				3,662.78
390 Other Purchased Professional and Technical Services				37,489.68
Total Purchased Professional and Technical Services				\$41,152.46
400 <u>Purchased Property Services</u>				
440 Rentals				566.40
Total Purchased Property Services				\$566.40
500 <u>Other Purchased Services</u>				
530 Communications				628.61
580 Travel				45.56
Total Other Purchased Services				\$674.17
600 <u>Supplies</u>				
610 General Supplies				6,373.38
Total Supplies				\$6,373.38
800 <u>Other Objects</u>				
810 Dues and Fees				165.00
Total Other Objects				\$165.00
Total 2420 Medical Services				\$480,153.33

LEA : 129545003     North Schuylkill SD

Printed 3/6/2025 1:32:12 PM

General Fund (10)				
2500 Support Services – Business	<u>Elementary</u>	<u>Secondary</u>	<u>Federal</u>	<u>Total</u>
100 <u>Personnel Services – Salaries</u>				
100 Personnel Services – Salaries				246,109.78
Total Personnel Services – Salaries				\$246,109.78
200 <u>Personnel Services – Employee Benefits</u>				
210 Group Insurance – Contracted Provider				97,730.32
220 Social Security Contributions				18,503.04
230 PSERS Retirement Contributions				83,299.13
260 Workers' Compensation				1,230.76
Total Personnel Services – Employee Benefits				\$200,763.25
300 <u>Purchased Professional and Technical Services</u>				
340 Technical Services				24,876.00
Total Purchased Professional and Technical Services				\$24,876.00
400 <u>Purchased Property Services</u>				
440 Rentals				4,594.22
Total Purchased Property Services				\$4,594.22
500 <u>Other Purchased Services</u>				
530 Communications				2,427.11
Total Other Purchased Services				\$2,427.11
600 <u>Supplies</u>				
610 General Supplies				3,614.87
Total Supplies				\$3,614.87
800 <u>Other Objects</u>				
810 Dues and Fees				3,208.00
Total Other Objects				\$3,208.00
Total 2500 Support Services – Business				\$485,593.23

LEA : 129545003     North Schuylkill SD

Printed 3/6/2025 1:32:12 PM

General Fund (10)

2510 Fiscal Services

	<u>Elementary</u>	<u>Secondary</u>	<u>Federal</u>	<u>Total</u>
<b>100 <u>Personnel Services – Salaries</u></b>				
100 Personnel Services – Salaries				184,409.80
<b>Total Personnel Services – Salaries</b>				<b>\$184,409.80</b>
<b>200 <u>Personnel Services – Employee Benefits</u></b>				
210 Group Insurance – Contracted Provider				69,885.38
220 Social Security Contributions				13,885.46
230 PSERS Retirement Contributions				62,321.06
260 Workers' Compensation				922.14
<b>Total Personnel Services – Employee Benefits</b>				<b>\$147,014.04</b>
<b>300 <u>Purchased Professional and Technical Services</u></b>				
340 Technical Services				24,876.00
<b>Total Purchased Professional and Technical Services</b>				<b>\$24,876.00</b>
<b>400 <u>Purchased Property Services</u></b>				
440 Rentals				4,594.22
<b>Total Purchased Property Services</b>				<b>\$4,594.22</b>
<b>500 <u>Other Purchased Services</u></b>				
530 Communications				2,427.11
<b>Total Other Purchased Services</b>				<b>\$2,427.11</b>
<b>600 <u>Supplies</u></b>				
610 General Supplies				3,614.87
<b>Total Supplies</b>				<b>\$3,614.87</b>
<b>800 <u>Other Objects</u></b>				
810 Dues and Fees				3,208.00
<b>Total Other Objects</b>				<b>\$3,208.00</b>
<b>Total 2510 Fiscal Services</b>				<b>\$370,144.04</b>

LEA : 129545003     North Schuylkill SD

Printed 3/6/2025 1:32:12 PM

General Fund (10)

2511 Supervision of Fiscal Services - Head of Component	<u>Elementary</u>	<u>Secondary</u>	<u>Federal</u>	<u>Total</u>
100 <u>Personnel Services – Salaries</u>				
100 Personnel Services – Salaries				123,976.00
Total Personnel Services – Salaries				\$123,976.00
200 <u>Personnel Services – Employee Benefits</u>				
210 Group Insurance – Contracted Provider				43,541.91
220 Social Security Contributions				9,477.08
230 PSERS Retirement Contributions				42,151.84
260 Workers' Compensation				619.92
Total Personnel Services – Employee Benefits				\$95,790.75
Total 2511 Supervision of Fiscal Services - Head of Component				\$219,766.75



LEA : 129545003     North Schuylkill SD

Printed 3/6/2025 1:32:12 PM

General Fund (10)				
2515 Financial Accounting Services	<u>Elementary</u>	<u>Secondary</u>	<u>Federal</u>	<u>Total</u>
100 <u>Personnel Services – Salaries</u>				
100 Personnel Services – Salaries				60,433.80
Total Personnel Services – Salaries				\$60,433.80
200 <u>Personnel Services – Employee Benefits</u>				
210 Group Insurance – Contracted Provider				26,343.47
220 Social Security Contributions				4,408.38
230 PSERS Retirement Contributions				20,169.22
260 Workers' Compensation				302.22
Total Personnel Services – Employee Benefits				\$51,223.29
300 <u>Purchased Professional and Technical Services</u>				
340 Technical Services				24,876.00
Total Purchased Professional and Technical Services				\$24,876.00
400 <u>Purchased Property Services</u>				
440 Rentals				4,594.22
Total Purchased Property Services				\$4,594.22
500 <u>Other Purchased Services</u>				
530 Communications				2,427.11
Total Other Purchased Services				\$2,427.11
600 <u>Supplies</u>				
610 General Supplies				3,614.87
Total Supplies				\$3,614.87
800 <u>Other Objects</u>				
810 Dues and Fees				3,208.00
Total Other Objects				\$3,208.00
Total 2515 Financial Accounting Services				\$150,377.29

LEA : 129545003     North Schuylkill SD

Printed 3/6/2025 1:32:12 PM

General Fund (10)

2520 Purchasing Services

Elementary                      Secondary                      Federal                      Total

100 <u>Personnel Services – Salaries</u>				
100 Personnel Services – Salaries				61,699.98
<b>Total Personnel Services – Salaries</b>				<b>\$61,699.98</b>
200 <u>Personnel Services – Employee Benefits</u>				
210 Group Insurance – Contracted Provider				27,844.94
220 Social Security Contributions				4,617.58
230 PSERS Retirement Contributions				20,978.07
260 Workers' Compensation				308.62
<b>Total Personnel Services – Employee Benefits</b>				<b>\$53,749.21</b>
<b>Total 2520 Purchasing Services</b>				<b>\$115,449.19</b>

LEA : 129545003     North Schuylkill SD

Printed 3/6/2025 1:32:12 PM

General Fund (10)				
2600 Operation and Maintenance of Plant Services	<u>Elementary</u>	<u>Secondary</u>	<u>Federal</u>	<u>Total</u>
100 <u>Personnel Services – Salaries</u>				
100 Personnel Services – Salaries				1,049,406.63
Total Personnel Services – Salaries				\$1,049,406.63
200 <u>Personnel Services – Employee Benefits</u>				
210 Group Insurance – Contracted Provider				455,385.47
220 Social Security Contributions				78,138.10
230 PSERS Retirement Contributions				356,360.47
260 Workers' Compensation				2,936.33
291 Other Retirement Plans				8,183.90
Total Personnel Services – Employee Benefits				\$901,004.27
300 <u>Purchased Professional and Technical Services</u>				
340 Technical Services				7,386.26
390 Other Purchased Professional and Technical Services				361.90
Total Purchased Professional and Technical Services				\$7,748.16
400 <u>Purchased Property Services</u>				
410 Cleaning Services				22,070.02
420 Utility Services				387,145.50
430 Repairs and Maintenance Services				202,401.06
440 Rentals				3,967.48
460 Extermination Services				3,351.56
490 Other Purchased Property Services				66,047.00
Total Purchased Property Services				\$684,982.62
500 <u>Other Purchased Services</u>				
523 General Property and Liability Insurance				80,868.85
530 Communications				10,781.60
Total Other Purchased Services				\$91,650.45
600 <u>Supplies</u>				
610 General Supplies	87,079.55	132,335.24		219,414.79
620 Energy				129,019.87
Total Supplies	\$87,079.55	\$132,335.24		\$348,434.66
700 <u>Property</u>				
752 Capital Equipment – Original and Additional				4,499.65
Total Property				\$4,499.65
800 <u>Other Objects</u>				
810 Dues and Fees				1,631.00
Total Other Objects				\$1,631.00
Total 2600 Operation and Maintenance of Plant Services	\$87,079.55	\$132,335.24		\$3,089,357.44

LEA : 129545003     North Schuylkill SD

Printed 3/6/2025 1:32:12 PM

General Fund (10)				
2620 Operation of Buildings Services	<u>Elementary</u>	<u>Secondary</u>	<u>Federal</u>	<u>Total</u>
100 <u>Personnel Services – Salaries</u>				
100 Personnel Services – Salaries				1,049,406.63
Total Personnel Services – Salaries				\$1,049,406.63
200 <u>Personnel Services – Employee Benefits</u>				
210 Group Insurance – Contracted Provider				455,385.47
220 Social Security Contributions				78,138.10
230 PSERS Retirement Contributions				356,360.47
260 Workers' Compensation				2,936.33
291 Other Retirement Plans				8,183.90
Total Personnel Services – Employee Benefits				\$901,004.27
300 <u>Purchased Professional and Technical Services</u>				
340 Technical Services				7,386.26
390 Other Purchased Professional and Technical Services				361.90
Total Purchased Professional and Technical Services				\$7,748.16
400 <u>Purchased Property Services</u>				
410 Cleaning Services				22,070.02
420 Utility Services				387,145.50
430 Repairs and Maintenance Services				202,401.06
440 Rentals				3,967.48
460 Extermination Services				3,351.56
490 Other Purchased Property Services				66,047.00
Total Purchased Property Services				\$684,982.62
500 <u>Other Purchased Services</u>				
523 General Property and Liability Insurance				80,868.85
530 Communications				10,781.60
Total Other Purchased Services				\$91,650.45
600 <u>Supplies</u>				
610 General Supplies	87,079.55	132,335.24		219,414.79
620 Energy				129,019.87
Total Supplies	\$87,079.55	\$132,335.24		\$348,434.66
700 <u>Property</u>				
752 Capital Equipment – Original and Additional				4,499.65
Total Property				\$4,499.65
800 <u>Other Objects</u>				
810 Dues and Fees				1,631.00
Total Other Objects				\$1,631.00
Total 2620 Operation of Buildings Services	\$87,079.55	\$132,335.24		\$3,089,357.44

LEA : 129545003     North Schuylkill SD

Printed 3/6/2025 1:32:12 PM

General Fund (10)

2700 Student Transportation Services	<u>Elementary</u>	<u>Secondary</u>	<u>Federal</u>	<u>Total</u>
100 <u>Personnel Services – Salaries</u>				
100 Personnel Services – Salaries				56,045.48
Total Personnel Services – Salaries				\$56,045.48
200 <u>Personnel Services – Employee Benefits</u>				
210 Group Insurance – Contracted Provider				25,981.56
220 Social Security Contributions				4,194.03
230 PSERS Retirement Contributions				19,055.26
260 Workers' Compensation				280.31
Total Personnel Services – Employee Benefits				\$49,511.16
500 <u>Other Purchased Services</u>				
513 Contracted Carriers				2,253,845.52
516 Student Transportation Services From the IU				2,261.10
Total Other Purchased Services				\$2,256,106.62
600 <u>Supplies</u>				
610 General Supplies				819.59
620 Energy				34,058.34
630 Food				28.23
Total Supplies				\$34,906.16
Total 2700 Student Transportation Services				\$2,396,569.42

LEA : 129545003     North Schuylkill SD

Printed 3/6/2025 1:32:12 PM

General Fund (10)

2710 Supervision of Student Transportation Services	<u>Elementary</u>	<u>Secondary</u>	<u>Federal</u>	<u>Total</u>
100 <u>Personnel Services – Salaries</u>				
100 Personnel Services – Salaries				56,045.48
Total Personnel Services – Salaries				\$56,045.48
200 <u>Personnel Services – Employee Benefits</u>				
210 Group Insurance – Contracted Provider				25,981.56
220 Social Security Contributions				4,194.03
230 PSERS Retirement Contributions				19,055.26
260 Workers' Compensation				280.31
Total Personnel Services – Employee Benefits				\$49,511.16
500 <u>Other Purchased Services</u>				
513 Contracted Carriers				2,232,670.52
516 Student Transportation Services From the IU				2,261.10
Total Other Purchased Services				\$2,234,931.62
600 <u>Supplies</u>				
610 General Supplies				819.59
620 Energy				34,058.34
630 Food				28.23
Total Supplies				\$34,906.16
Total 2710 Supervision of Student Transportation Services				\$2,375,394.42

LEA : 129545003     North Schuylkill SD

Printed 3/6/2025 1:32:12 PM

General Fund (10)				
2711 Supervision of Student Transportation Services – Head of Component	<u>Elementary</u>	<u>Secondary</u>	<u>Federal</u>	<u>Total</u>
100 <u>Personnel Services – Salaries</u>				
100 Personnel Services – Salaries				56,045.48
Total Personnel Services – Salaries				\$56,045.48
200 <u>Personnel Services – Employee Benefits</u>				
210 Group Insurance – Contracted Provider				25,981.56
220 Social Security Contributions				4,194.03
230 PSERS Retirement Contributions				19,055.26
260 Workers' Compensation				280.31
Total Personnel Services – Employee Benefits				\$49,511.16
500 <u>Other Purchased Services</u>				
513 Contracted Carriers				2,232,670.52
516 Student Transportation Services From the IU				2,261.10
Total Other Purchased Services				\$2,234,931.62
600 <u>Supplies</u>				
610 General Supplies				819.59
620 Energy				34,058.34
630 Food				28.23
Total Supplies				\$34,906.16
Total 2711 Supervision of Student Transportation Services – Head of Component				\$2,375,394.42

LEA : 129545003     North Schuylkill SD

Printed 3/6/2025 1:32:12 PM

General Fund (10)

2750 Nonpublic Transportation	<u>Elementary</u>	<u>Secondary</u>	<u>Federal</u>	<u>Total</u>
500 <u>Other Purchased Services</u>				
513 Contracted Carriers				21,175.00
Total Other Purchased Services				\$21,175.00
Total 2750 Nonpublic Transportation				\$21,175.00



LEA : 129545003     North Schuylkill SD

Printed 3/6/2025 1:32:12 PM

General Fund (10)				
2800 Support Services – Central	<u>Elementary</u>	<u>Secondary</u>	<u>Federal</u>	<u>Total</u>
100 <u>Personnel Services – Salaries</u>				
100 Personnel Services – Salaries				323,911.40
Total Personnel Services – Salaries				\$323,911.40
200 <u>Personnel Services – Employee Benefits</u>				
210 Group Insurance – Contracted Provider				106,752.84
220 Social Security Contributions				24,632.89
230 PSERS Retirement Contributions				109,377.31
260 Workers' Compensation				1,619.77
Total Personnel Services – Employee Benefits				\$242,382.81
500 <u>Other Purchased Services</u>				
520 Insurance – General				15,484.00
530 Communications				8,913.06
Total Other Purchased Services				\$24,397.06
600 <u>Supplies</u>				
610 General Supplies				11,366.87
640 Books and Periodicals				46,472.65
Total Supplies				\$57,839.52
800 <u>Other Objects</u>				
810 Dues and Fees				50.00
Total Other Objects				\$50.00
Total 2800 Support Services – Central				\$648,580.79

LEA : 129545003     North Schuylkill SD

Printed 3/6/2025 1:32:12 PM

General Fund (10)				
2820 Information Services	<u>Elementary</u>	<u>Secondary</u>	<u>Federal</u>	<u>Total</u>
100 <u>Personnel Services – Salaries</u>				
100 Personnel Services – Salaries				323,911.40
Total Personnel Services – Salaries				\$323,911.40
200 <u>Personnel Services – Employee Benefits</u>				
210 Group Insurance – Contracted Provider				106,752.84
220 Social Security Contributions				24,632.89
230 PSERS Retirement Contributions				109,377.31
260 Workers' Compensation				1,619.77
Total Personnel Services – Employee Benefits				\$242,382.81
500 <u>Other Purchased Services</u>				
520 Insurance – General				15,484.00
530 Communications				8,913.06
Total Other Purchased Services				\$24,397.06
600 <u>Supplies</u>				
610 General Supplies				11,366.87
640 Books and Periodicals				46,472.65
Total Supplies				\$57,839.52
800 <u>Other Objects</u>				
810 Dues and Fees				50.00
Total Other Objects				\$50.00
Total 2820 Information Services				\$648,580.79

LEA : 129545003     North Schuylkill SD

Printed 3/6/2025 1:32:12 PM

General Fund (10)				
2822 Internal Information Services	<u>Elementary</u>	<u>Secondary</u>	<u>Federal</u>	<u>Total</u>
100 <u>Personnel Services – Salaries</u>				
100 Personnel Services – Salaries				323,911.40
Total Personnel Services – Salaries				\$323,911.40
200 <u>Personnel Services – Employee Benefits</u>				
210 Group Insurance – Contracted Provider				106,752.84
220 Social Security Contributions				24,632.89
230 PSERS Retirement Contributions				109,377.31
260 Workers' Compensation				1,619.77
Total Personnel Services – Employee Benefits				\$242,382.81
500 <u>Other Purchased Services</u>				
520 Insurance – General				15,484.00
530 Communications				8,913.06
Total Other Purchased Services				\$24,397.06
600 <u>Supplies</u>				
610 General Supplies				11,366.87
640 Books and Periodicals				46,472.65
Total Supplies				\$57,839.52
800 <u>Other Objects</u>				
810 Dues and Fees				50.00
Total Other Objects				\$50.00
Total 2822 Internal Information Services				\$648,580.79

LEA : 129545003      North Schuylkill SD

Printed 3/6/2025 1:32:17 PM

<b>General Fund (10)</b>	
<b>3000 Operation of Non-Instructional Services</b>	<b><u>Total</u></b>
<b>100 <u>Personnel Services – Salaries</u></b>	
100 Personnel Services – Salaries	367,195.13
<b>Total Personnel Services – Salaries</b>	<b>\$367,195.13</b>
<b>200 <u>Personnel Services – Employee Benefits</u></b>	
210 Group Insurance – Contracted Provider	8,589.75
220 Social Security Contributions	27,834.12
230 PSERS Retirement Contributions	73,738.65
260 Workers' Compensation	1,836.09
<b>Total Personnel Services – Employee Benefits</b>	<b>\$111,998.61</b>
<b>300 <u>Purchased Professional and Technical Services</u></b>	
330 Other Professional Services	33,050.00
390 Other Purchased Professional and Technical Services	49,587.18
<b>Total Purchased Professional and Technical Services</b>	<b>\$82,637.18</b>
<b>400 <u>Purchased Property Services</u></b>	
410 Cleaning Services	4,564.00
430 Repairs and Maintenance Services	4,021.43
440 Rentals	1,040.00
<b>Total Purchased Property Services</b>	<b>\$9,625.43</b>
<b>500 <u>Other Purchased Services</u></b>	
510 Student Transportation Services	63,579.80
520 Insurance – General	18,340.00
530 Communications	2,539.62
549 Other Advertising/Public Relations	50.00
580 Travel	6,990.82
<b>Total Other Purchased Services</b>	<b>\$91,500.24</b>
<b>600 <u>Supplies</u></b>	
610 General Supplies	186,478.50
620 Energy	481.50
630 Food	1,063.25
<b>Total Supplies</b>	<b>\$188,023.25</b>
<b>700 <u>Property</u></b>	
752 Capital Equipment – Original and Additional	1,080.00
762 Capitalized Equipment - Replacement	18,949.35
<b>Total Property</b>	<b>\$20,029.35</b>
<b>800 <u>Other Objects</u></b>	
810 Dues and Fees	31,629.42
870 Donated Services	14,250.00
<b>Total Other Objects</b>	<b>\$45,879.42</b>
<b>Total 3000 Operation of Non-Instructional Services</b>	<b>\$916,888.61</b>

LEA : 129545003     North Schuylkill SD

Printed 3/6/2025 1:32:17 PM

General Fund (10)				
3200 Student Activities	<u>Elementary</u>	<u>Secondary</u>	<u>Federal</u>	<u>Total</u>
100 <u>Personnel Services – Salaries</u>				
100 Personnel Services – Salaries				363,368.24
Total Personnel Services – Salaries				\$363,368.24
200 <u>Personnel Services – Employee Benefits</u>				
210 Group Insurance – Contracted Provider				8,589.75
220 Social Security Contributions				27,541.32
230 PSERS Retirement Contributions				73,163.10
260 Workers' Compensation				1,816.90
Total Personnel Services – Employee Benefits				\$111,111.07
300 <u>Purchased Professional and Technical Services</u>				
330 Other Professional Services				33,050.00
390 Other Purchased Professional and Technical Services				49,587.18
Total Purchased Professional and Technical Services				\$82,637.18
400 <u>Purchased Property Services</u>				
410 Cleaning Services				4,564.00
430 Repairs and Maintenance Services				4,021.43
440 Rentals				1,040.00
Total Purchased Property Services				\$9,625.43
500 <u>Other Purchased Services</u>				
510 Student Transportation Services				63,579.80
520 Insurance – General				18,340.00
530 Communications				2,539.62
549 Other Advertising/Public Relations				50.00
580 Travel				6,990.82
Total Other Purchased Services				\$91,500.24
600 <u>Supplies</u>				
610 General Supplies				179,577.01
620 Energy				481.50
630 Food				1,063.25
Total Supplies				\$181,121.76
700 <u>Property</u>				
752 Capital Equipment – Original and Additional				1,080.00
762 Capitalized Equipment - Replacement				18,949.35
Total Property				\$20,029.35
800 <u>Other Objects</u>				
810 Dues and Fees				31,629.42
Total Other Objects				\$31,629.42
Total 3200 Student Activities				\$891,022.69

LEA : 129545003     North Schuylkill SD

Printed 3/6/2025 1:32:17 PM

General Fund (10)				
3300 Community Services	<u>Elementary</u>	<u>Secondary</u>	<u>Federal</u>	<u>Total</u>
100 <u>Personnel Services – Salaries</u>				
100 Personnel Services – Salaries				3,826.89
Total Personnel Services – Salaries				\$3,826.89
200 <u>Personnel Services – Employee Benefits</u>				
220 Social Security Contributions				292.80
230 PSERS Retirement Contributions				575.55
260 Workers’ Compensation				19.19
Total Personnel Services – Employee Benefits				\$887.54
600 <u>Supplies</u>				
610 General Supplies				6,901.49
Total Supplies				\$6,901.49
800 <u>Other Objects</u>				
870 Donated Services				14,250.00
Total Other Objects				\$14,250.00
Total 3300 Community Services				\$25,865.92

LEA : 129545003     North Schuylkill SD

Printed 3/6/2025 1:32:22 PM

General Fund (10)

4000 Facilities Acquisition, Construction and Improvement Services	<u>Total</u>
400 <u>Purchased Property Services</u>	
450 Construction Services	2,586.31
Total Purchased Property Services	\$2,586.31
Total 4000 Facilities Acquisition, Construction and Improvement Services	\$2,586.31

LEA : 129545003     North Schuylkill SD

Printed 3/6/2025 1:32:22 PM

General Fund (10)

4200 Existing Site Improvement Services	<u>Elementary</u>	<u>Secondary</u>	<u>Federal</u>	<u>Total</u>
400 <u>Purchased Property Services</u>				
450 Construction Services				2,586.31
Total Purchased Property Services				\$2,586.31
Total 4200 Existing Site Improvement Services				\$2,586.31



LEA : 129545003     North Schuylkill SD

Printed 3/6/2025 1:32:26 PM

General Fund (10)

5000 Other Expenditures and Financing Uses		<u>Total</u>
800 <u>Other Objects</u>		
830 Interest	659,941.96	
Total Other Objects	\$659,941.96	
900 <u>Other Uses of Funds</u>		
910 Redemption of Principal	1,441,640.05	
932 Capital Reserve Fund Transfers Applicable To Fund 32	1,125,075.26	
Total Other Uses of Funds	\$2,566,715.31	
Total 5000 Other Expenditures and Financing Uses	\$3,226,657.27	

LEA : 129545003     North Schuylkill SD

Printed 3/6/2025 1:32:26 PM

General Fund (10)

5100 Debt Service / Other Expenditures and Financing Uses	<u>Elementary</u>	<u>Secondary</u>	<u>Federal</u>	<u>Total</u>
800 <u>Other Objects</u>				
830 Interest				659,941.96
Total Other Objects				\$659,941.96
900 <u>Other Uses of Funds</u>				
910 Redemption of Principal				1,441,640.05
Total Other Uses of Funds				\$1,441,640.05
Total 5100 Debt Service / Other Expenditures and Financing Uses				\$2,101,582.01

LEA : 129545003     North Schuylkill SD

Printed 3/6/2025 1:32:26 PM

General Fund (10)				
5110 Debt Service	<u>Elementary</u>	<u>Secondary</u>	<u>Federal</u>	<u>Total</u>
800 <u>Other Objects</u>				
830 Interest				659,941.96
Total Other Objects				\$659,941.96
900 <u>Other Uses of Funds</u>				
910 Redemption of Principal				1,441,640.05
Total Other Uses of Funds				\$1,441,640.05
Total 5110 Debt Service				\$2,101,582.01

LEA : 129545003     North Schuylkill SD

Printed 3/6/2025 1:32:26 PM

General Fund (10)

5200 Interfund Transfers – Out	<u>Elementary</u>	<u>Secondary</u>	<u>Federal</u>	<u>Total</u>
900 <u>Other Uses of Funds</u>				
932 Capital Reserve Fund Transfers Applicable To Fund 32				1,125,075.26
Total Other Uses of Funds				\$1,125,075.26
Total 5200 Interfund Transfers – Out				\$1,125,075.26

LEA : 129545003     North Schuylkill SD

Printed 3/6/2025 1:32:26 PM

General Fund (10)

5230 Capital Projects Fund Transfers	<u>Elementary</u>	<u>Secondary</u>	<u>Federal</u>	<u>Total</u>
900 <u>Other Uses of Funds</u>				
932 Capital Reserve Fund Transfers Applicable To Fund 32				1,125,075.26
Total Other Uses of Funds				\$1,125,075.26
Total 5230 Capital Projects Fund Transfers				\$1,125,075.26

LEA : 129545003     North Schuylkill SD

Printed 3/6/2025 1:32:15 PM

Capital Reserve Fund - § 1431 (32)

2000 Support Services

Total

700 Property

762 Capitalized Equipment - Replacement

160,120.00

Total Property	\$160,120.00
Total 2000 Support Services	\$160,120.00

LEA : 129545003     North Schuylkill SD

Printed 3/6/2025 1:32:15 PM

Capital Reserve Fund - § 1431 (32)

2600 Operation and Maintenance of Plant Services	<u>Elementary</u>	<u>Secondary</u>	<u>Federal</u>	<u>Total</u>
700 <u>Property</u>				
762 Capitalized Equipment - Replacement				160,120.00
Total Property				\$160,120.00
Total 2600 Operation and Maintenance of Plant Services				\$160,120.00

LEA : 129545003     North Schuylkill SD

Printed 3/6/2025 1:32:15 PM

Capital Reserve Fund - § 1431 (32)				
2620 Operation of Buildings Services	<u>Elementary</u>	<u>Secondary</u>	<u>Federal</u>	<u>Total</u>
700 <u>Property</u>				
762 Capitalized Equipment - Replacement				160,120.00
Total Property				\$160,120.00
Total 2620 Operation of Buildings Services				\$160,120.00



LEA : 129545003     North Schuylkill SD

Printed 3/6/2025 1:32:20 PM

Capital Reserve Fund - § 1431 (32)

3000 Operation of Non-Instructional Services

Total

700 Property

752 Capital Equipment – Original and Additional

43,096.00

**Total Property**

**\$43,096.00**

**Total 3000 Operation of Non-Instructional Services**

**\$43,096.00**

LEA : 129545003     North Schuylkill SD

Printed 3/6/2025 1:32:20 PM

Capital Reserve Fund - § 1431 (32)

3200 Student Activities	<u>Elementary</u>	<u>Secondary</u>	<u>Federal</u>	<u>Total</u>
700 <u>Property</u>				
752 Capital Equipment – Original and Additional				43,096.00
Total Property				\$43,096.00
Total 3200 Student Activities				\$43,096.00

LEA : 129545003     North Schuylkill SD

Printed 3/6/2025 1:32:24 PM

Capital Reserve Fund - § 1431 (32)

4000 Facilities Acquisition, Construction and Improvement Services

Total

400 Purchased Property Services

450 Construction Services	2,343,293.73
---------------------------	--------------

Total Purchased Property Services	\$2,343,293.73
-----------------------------------	----------------

700 Property

752 Capital Equipment – Original and Additional	41,186.50
---	-----------

Total Property	\$41,186.50
----------------	-------------

Total 4000 Facilities Acquisition, Construction and Improvement Services	\$2,384,480.23
--	----------------

<u>Elementary</u>	<u>Secondary</u>	<u>Federal</u>	<u>Total</u>
-------------------	------------------	----------------	--------------

<u>Elementary</u>	<u>Secondary</u>	<u>Federal</u>	<u>Total</u>
-------------------	------------------	----------------	--------------

[illegible]

2,343,293.73

**\$2,343,293.73**

[illegible]

41,186.50

**\$41,186.50**

**\$2,384,480.23**

LEA : 129545003 North Schuylkill SD

Printed 3/6/2025 1:32:29 PM

	<u>General Fund(10)</u>	<u>Student Sponsored Activity Fund(21)</u>	<u>Public Purpose Trust(27)</u>	<u>Other Compt Approved (28)</u>	<u>Athletic / Activity(29)</u>
<b>1000 <u>Instruction</u></b>					
1100 Regular Programs - Elementary / Secondary	15,273,886.84				
1200 Special Programs - Elementary / Secondary	4,775,670.95				
1300 Vocational Education	735,101.48				
1400 Other Instructional Programs - Elementary / Secondary	527,846.90				
<b>Total Instruction</b>	<b>\$21,312,506.17</b>				
<b>2000 <u>Support Services</u></b>					
2100 Support Services - Students	1,434,908.50				
2200 Support Services - Instructional Staff	640,945.55				
2300 Support Services - Administration	1,991,966.26				
2400 Support Services - Pupil Health	698,066.67				
2500 Support Services - Business	485,593.23				
2600 Operation and Maintenance of Plant Services	3,089,357.44				
2700 Student Transportation Services	2,396,569.42				
2800 Support Services - Central	648,580.79				
<b>Total Support Services</b>	<b>\$11,385,987.86</b>				
<b>3000 <u>Operation of Non-Instructional Services</u></b>					
3200 Student Activities	891,022.69				
3300 Community Services	25,865.92				
<b>Total Operation of Non-Instructional Services</b>	<b>\$916,888.61</b>				
<b>4000 <u>Facilities Acquisition, Construction and Improvement Services</u></b>					
4100 Site Acquisition Services - Original and Additional					
4200 Existing Site Improvement Services	2,586.31				
<b>Total Facilities Acquisition, Construction and Improvement Services</b>	<b>\$2,586.31</b>				
<b>5000 <u>Other Expenditures and Financing Uses</u></b>					
5100 Debt Service / Other Expenditures and Financing Uses	2,101,582.01				
5200 Interfund Transfers - Out	1,125,075.26				
<b>Total Other Expenditures and Financing Uses</b>	<b>\$3,226,657.27</b>				
<b>TOTAL ACTUAL EXPENDITURES &amp; OTHER FINANCING USES</b>	<b>\$36,844,626.22</b>				

LEA : 129545003     North Schuylkill SD

Printed 3/6/2025 1:32:29 PM

	<u>Capital Reserve (690.1850)(31)</u>	<u>Capital Reserve (1431)(32)</u>	<u>Other Capital Projects Fund(39)</u>	<u>Debt Service(40)</u>	<u>Permanent(90)</u>
<b>1000 <u>Instruction</u></b>					
1100 Regular Programs - Elementary / Secondary					
1200 Special Programs - Elementary / Secondary					
1300 Vocational Education					
1400 Other Instructional Programs - Elementary / Secondary					
<b>Total Instruction</b>					
<b>2000 <u>Support Services</u></b>					
2100 Support Services - Students					
2200 Support Services - Instructional Staff					
2300 Support Services - Administration					
2400 Support Services - Pupil Health					
2500 Support Services - Business					
2600 Operation and Maintenance of Plant Services			160,120.00		
2700 Student Transportation Services					
2800 Support Services - Central					
<b>Total Support Services</b>			<b>\$160,120.00</b>		
<b>3000 <u>Operation of Non-Instructional Services</u></b>					
3200 Student Activities			43,096.00		
3300 Community Services					
<b>Total Operation of Non-Instructional Services</b>			<b>\$43,096.00</b>		
<b>4000 <u>Facilities Acquisition, Construction and Improvement Services</u></b>					
4100 Site Acquisition Services - Original and Additional			2,384,480.23		
4200 Existing Site Improvement Services					
<b>Total Facilities Acquisition, Construction and Improvement Services</b>			<b>\$2,384,480.23</b>		
<b>5000 <u>Other Expenditures and Financing Uses</u></b>					
5100 Debt Service / Other Expenditures and Financing Uses					
5200 Interfund Transfers - Out					
<b>Total Other Expenditures and Financing Uses</b>					
<b>TOTAL ACTUAL EXPENDITURES &amp; OTHER FINANCING USES</b>			<b>\$2,587,696.23</b>		

LEA : 129545003 North Schuylkill SD

Printed 3/6/2025 1:32:29 PM

	<u>Total</u>
<b>1000 <u>Instruction</u></b>	
1100 Regular Programs - Elementary / Secondary	15,273,886.84
1200 Special Programs - Elementary / Secondary	4,775,670.95
1300 Vocational Education	735,101.48
1400 Other Instructional Programs - Elementary / Secondary	527,846.90
<b>Total Instruction</b>	<b>\$21,312,506.17</b>
<b>2000 <u>Support Services</u></b>	
2100 Support Services - Students	1,434,908.50
2200 Support Services - Instructional Staff	640,945.55
2300 Support Services - Administration	1,991,966.26
2400 Support Services - Pupil Health	698,066.67
2500 Support Services - Business	485,593.23
2600 Operation and Maintenance of Plant Services	3,249,477.44
2700 Student Transportation Services	2,396,569.42
2800 Support Services - Central	648,580.79
<b>Total Support Services</b>	<b>\$11,546,107.86</b>
<b>3000 <u>Operation of Non-Instructional Services</u></b>	
3200 Student Activities	934,118.69
3300 Community Services	25,865.92
<b>Total Operation of Non-Instructional Services</b>	<b>\$959,984.61</b>
<b>4000 <u>Facilities Acquisition, Construction and Improvement Services</u></b>	
4100 Site Acquisition Services - Original and Additional	2,384,480.23
4200 Existing Site Improvement Services	2,586.31
<b>Total Facilities Acquisition, Construction and Improvement Services</b>	<b>\$2,387,066.54</b>
<b>5000 <u>Other Expenditures and Financing Uses</u></b>	
5100 Debt Service / Other Expenditures and Financing Uses	2,101,582.01
5200 Interfund Transfers - Out	1,125,075.26
<b>Total Other Expenditures and Financing Uses</b>	<b>\$3,226,657.27</b>
<b>TOTAL ACTUAL EXPENDITURES &amp; OTHER FINANCING USES</b>	<b>\$39,432,322.45</b>

LEA : 129545003     North Schuylkill SD

Printed 3/6/2025 1:32:40 PM

PSERS Salary Data (Salary Data should relate to the General Fund only)

Amount	Description	Amount
	Total Salary Base for salaries subject to PSERS withholding	13,806,645.47
	Total Federally Funded salaries subject to PSERS withholding	1,128,313.65

Title I Expenditure Data

Amount	Description	Amount
	Expenditures Funded with Current Title I Funds	595,142.00
Total	Title I Expenditure Data	\$595,142.00

Title IV Revenue Data

Amount	Description	Amount
	Revenue from Title IV-A-1: Student Support and Academic Enrichment Grants	44,948.00



1 .	<u>Current Special Education Expenditures within Function 1000</u> See list of exclusions in the note below.	4,775,670.95
2 .	<u>Current Special Education Expenditures within Function 2000</u> See list of exclusions in the note below.	353,229.83
2A.	<u>Current Special Education Expenditures within Sub-Function 2100</u> This data should also be included in line 2 above. See list of exclusions in the note below.	
2B.	<u>Current Special Education Expenditures within Sub-Function 2200</u> This data should also be included in line 2 above. See list of exclusions in the note below.	
2C.	<u>Current Special Education Expenditures within Sub-Function 2700</u> This data should also be included in line 2 above. See list of exclusions in the note below.	
3.	<u>Current Special Education Expenditures within Sub-Function 3100</u> See list of exclusions in the note below.	
4.	<u>Current Special Education Expenditures within Sub-Function 3200</u> See list of exclusions in the note below.	

Note: The Current Special Education Expenditure amounts for each line should be calculated as follows:

- \* Include the total expenditures for special education costs from all governmental funds and the food service fund 51 for the function/sub-function requested
- \* Exclude data from sub-functions: 1243,1450,1500,1600,1807,2280,2450,2750,2990
- \* Exclude data from objects: 322,511,512,516,561,562,564,566,592,593,594,595,596,597,700,830,899

Benefits for Staff Relative to Collective Bargaining Agreements

	OBJECT	COVERED	NOT COVERED	TOTAL
10 General Fund				
	211 Medical Insurance			
	212 Dental Insurance			
	215 Eye Care Insurance			
	216 Prescription Insurance			
	271 Self-Insurance Medical Benefits	3,768,164.89		3,768,164.89
	272 Self-Insurance Dental Benefits	149,435.49		149,435.49
	275 Self-Insurance Eye Care Benefits	17,456.04		17,456.04
	276 Self-Insurance Prescription Benefits	683,482.73		683,482.73
	FUND TOTAL	\$4,618,539.15		\$4,618,539.15
50 Enterprise Fund				
	211 Medical Insurance			
	212 Dental Insurance			
	215 Eye Care Insurance			
	216 Prescription Insurance			
	271 Self-Insurance Medical Benefits	119,563.14		119,563.14
	272 Self-Insurance Dental Benefits	4,531.68		4,531.68
	275 Self-Insurance Eye Care Benefits	538.80		538.80
	276 Self-Insurance Prescription Benefits	21,059.34		21,059.34
	FUND TOTAL	\$145,692.96		\$145,692.96
60 Internal Service Fund	No Self Insurance data to report			
	211 Medical Insurance			
	212 Dental Insurance			
	215 Eye Care Insurance			
	216 Prescription Insurance			
	271 Self-Insurance Medical Benefits			
	272 Self-Insurance Dental Benefits			
	275 Self-Insurance Eye Care Benefits			
	276 Self-Insurance Prescription Benefits			
	FUND TOTAL			
Total of All Funds		\$4,764,232.11		\$4,764,232.11

LEA : 129545003     North Schuylkill SD

Printed 3/6/2025 1:32:45 PM

Function	Special Education (Prior Year)	Nonspecial Education (Prior Year)	Total (Prior Year)	Special Education (Current Year)	Nonspecial Education (Current Year)	Total (Current Year)
2120 Guidance Services		539,423.44	539,423.44		549,311.04	549,311.04
2140 Psychological Services		209,008.09	209,008.09		249,079.48	249,079.48
2150 Speech Pathology and Audiology Services						
2160 Social Work Services		454,735.11	454,735.11			
2260 Instruction and Curriculum Development Services	408,982.43		408,982.43	437,353.21		437,353.21
2350 Legal and Accounting Services	8,508.53	4,700.00	13,208.53	6,173.00	58,127.00	64,300.00
2420 Medical Services	453,925.87		453,925.87	480,153.33		480,153.33
2440 Nursing Services						
2700 Student Transportation Services		2,310,725.75	2,310,725.75		2,396,569.42	2,396,569.42
Total	\$871,416.83	\$3,518,592.39	\$4,390,009.22	\$923,679.54	\$3,253,086.94	\$4,176,766.48

LEA : 129545003     North Schuylkill SD

(PRINCIPAL AMOUNTS ONLY)								
<u>GOVERNMENTAL FUNDS/ ACTIVITIES</u>	Short-Term Borrowing	General Obligation Bonds/Notes	Authority Building Obligations	Leases, Other Right to Use Arrangements	Extended Term Financing Agreements	Other Long Term Debt/Liabilities	OPEB, Comp Abs, Net Pension Liab	Total
1. Debt at Beginning of Fiscal Year		25,005,000.00			1,425,230.00		48,132,529.00	74,562,759.00
2. Additional Debt Incurred During Year							1,441,370.00	1,441,370.00
3. Retirements and Repayments		1,305,000.00			136,640.00		2,040,187.00	3,481,827.00
4. Debt at End of Fiscal Year		23,700,000.00			1,288,590.00		47,533,712.00	72,522,302.00
5. Accreted Interest at End Of Fiscal Year								
6. Total Debt and Accreted Interest		23,700,000.00			1,288,590.00		47,533,712.00	72,522,302.00
7. Current Portion P&I - Due within 1 year		1,914,004.26			191,949.00			2,105,953.26
8. Interest Paid during current fiscal year		606,242.00			53,699.96			659,941.96

(PRINCIPAL AMOUNTS ONLY)								
<u>PROPRIETARY FUNDS</u>	Short-Term Borrowing	General Obligation Bonds/Notes	Authority Building Obligations	Leases, Other Right to Use Arrangements	Extended Term Financing Agreements	Other Long Term Debt/Liabilities	OPEB, Comp Abs, Net Pension Liab	Total
1. Debt at Beginning of Fiscal Year							888,356.00	888,356.00
2. Additional Debt Incurred During Year							93,630.00	93,630.00
3. Retirements and Repayments								
4. Debt at End of Fiscal Year							981,986.00	981,986.00
5. Accreted Interest at End Of Fiscal Year								
6. Total Debt and Accreted Interest							981,986.00	981,986.00
7. Current Portion P&I - Due within 1 year								
8. Interest Paid during current fiscal year								

LEA : 129545003     North Schuylkill SD

Total Principal and Interest Payments Made by Your School - All Funds

Function	Fund		Principal (910)	Principal (920)	Interest (830)	Total (Principal +Interest)	Misc Other Uses (990)
5110	10	General Fund	1,441,640.05		659,941.96	2,101,582.01	
5110	20	Special Revenue Funds					
5110	30	Capital Projects Funds					
5110	40	Debt Service Fund					
5110	90	Permanent Fund					
5120	10	General Fund					
5120	20	Special Revenue Funds					
5120	30	Capital Projects Funds					
5120	40	Debt Service Fund					
5140	10	General Fund					
5140	20	Special Revenue Funds					
5140	30	Capital Projects Funds					
5140	40	Debt Service Fund					
5140	90	Permanent Fund					
Total Debt Payments - Governmental Funds			\$1,441,640.05		\$659,941.96	\$2,101,582.01	

Function	Fund		Principal (910)	Principal (920)	Interest (830)	Total (Principal +Interest)
5110	50	Enterprise Fund				
5110	60	Internal Service Fund				
5120	50	Enterprise Fund				
5120	60	Internal Service Fund				
5140	50	Enterprise Fund				
5140	60	Internal Service Fund				
Total Debt Payments - Proprietary Funds						

LEA : 129545003     North Schuylkill SD

**Debt Details**  
**Governmental Funds/ Activities**

Debt Category	Debt Issue Date (MM/YYYY)	Principal Amounts Only				Current Portion Due Within One Year (Principal and Interest)	Interest Paid During Fiscal Year
		Debt at Beginning of Fiscal Year	Additions	Reductions / Repayments	Debt at End of Fiscal Year		
General Obligation Bonds/Notes – CIB	03/2022	5,580,000.00		485,000.00	5,095,000.00	650,275.00	160,125.00
General Obligation Bonds/Notes – CIB	03/2020	9,715,000.00		775,000.00	8,940,000.00	993,291.26	219,892.00
General Obligation Bonds/Notes – CIB	10/2019	9,710,000.00		45,000.00	9,665,000.00	270,438.00	226,225.00
Extended Term Financing Agreements		1,425,230.00		136,640.00	1,288,590.00	191,949.00	53,699.96
Net Pension Liability		38,074,644.00	1,441,370.00		39,516,014.00		
Other Post-Employment Benefits (OPEB)		9,113,537.00		1,904,657.00	7,208,880.00		
Compensated Absences		944,348.00		135,530.00	808,818.00		
Totals for Debt Entered:		\$74,562,759.00	\$1,441,370.00	\$3,481,827.00	\$72,522,302.00	\$2,105,953.26	\$659,941.96

**Bond Details**  
**Proprietary Funds**

Debt Category	Debt Issue Date (MM/YYYY)	Principal Amounts Only				Current Portion Due Within One Year (Principal and Interest)	Interest Paid During Fiscal Year
		Debt at Beginning of Fiscal Year	Additions	Reductions / Repayments	Debt at End of Fiscal Year		
Net Pension Liability		888,356.00	93,630.00		981,986.00		
Totals for Debt Entered:		\$888,356.00	\$93,630.00		\$981,986.00		

LEA : 129545003     North Schuylkill SD

**General Fund (10)**

Section 1: Tuition/Purchased Services as Reported within Expenditure Detail		Amount
Tuition Reported in General Fund Expenditures 1000-560		2,945,007.88
Purchased Services in General Fund Expenditures 1000-594 and 1000-597		340.44
Section 1 Total		\$2,945,348.32

Section 2: Tuition Paid to Institution Types During Fiscal Year		Tuition Paid For Nonspecial Education	Tuition Paid For Special Education	Total
1	1306 Institutions			
2	Institutionalized Children's Programs		44,952.83	44,952.83
3	Juveniles Incarcerated in Adult Facilities			
4	Residential Treatment Facilities		406,854.66	406,854.66
5	Other Local Education Agencies			
6	Brick and Mortar Charter Schools	126,826.08		126,826.08
7	Cyber Charter Schools	1,631,613.27		1,631,613.27
8	Career and Technology Centers	735,101.48		735,101.48
9	Approved Private Schools			
10	PA Chartered Schools for the Deaf and Blind			
11	Private Residential Rehabilitative Institutions			
12	Juvenile Detention Centers			
13	Special Program Jointures			
14	Other Tuition Not Included Elsewhere In This Section			
Section 2 Total		\$2,493,540.83	\$451,807.49	\$2,945,348.32

LEA : 129545003     North Schuylkill SD

Printed 3/6/2025 1:32:51 PM

Food Service / Cafeteria Operations Fund (51)

3000 Operation of Non-Instructional Services		<u>Total</u>
100	<u>Personnel Services – Salaries</u>	
100	Personnel Services – Salaries	371,362.00
Total Personnel Services – Salaries		\$371,362.00
200	<u>Personnel Services – Employee Benefits</u>	
210	Group Insurance – Contracted Provider	146,654.58
220	Social Security Contributions	27,792.18
230	PSERS Retirement Contributions	48,891.98
260	Workers' Compensation	1,855.26
Total Personnel Services – Employee Benefits		\$225,194.00
500	<u>Other Purchased Services</u>	
570	Food Service Management	716,632.00
Total Other Purchased Services		\$716,632.00
600	<u>Supplies</u>	
610	General Supplies	82,793.00
Total Supplies		\$82,793.00
700	<u>Property</u>	
740	Depreciation	36,741.00
Total Property		\$36,741.00
Total 3000 Operation of Non-Instructional Services		\$1,432,722.00



LEA : 129545003     North Schuylkill SD

Printed 3/6/2025 1:32:51 PM

Food Service / Cafeteria Operations Fund (51)

3100 Food Services	<u>Elementary</u>	<u>Secondary</u>	<u>Federal</u>	<u>Total</u>
100 <u>Personnel Services – Salaries</u>				
100 Personnel Services – Salaries				371,362.00
Total Personnel Services – Salaries				\$371,362.00
200 <u>Personnel Services – Employee Benefits</u>				
210 Group Insurance – Contracted Provider				146,654.58
220 Social Security Contributions				27,792.18
230 PSERS Retirement Contributions				48,891.98
260 Workers' Compensation				1,855.26
Total Personnel Services – Employee Benefits				\$225,194.00
500 <u>Other Purchased Services</u>				
570 Food Service Management				716,632.00
Total Other Purchased Services				\$716,632.00
600 <u>Supplies</u>				
610 General Supplies				82,793.00
Total Supplies				\$82,793.00
700 <u>Property</u>				
740 Depreciation				36,741.00
Total Property				\$36,741.00
Total 3100 Food Services				\$1,432,722.00

	<u>Food Service(51)</u>	<u>Child Care Operations(52)</u>	<u>Other Enterprise(58)</u>	<u>Internal Service(60)</u>	<u>Total</u>
<b>3000 <u>Operation of Non-Instructional Services</u></b>					
3100 Food Services	1,432,722.00				1,432,722.00
<b>Total Operation of Non-Instructional Services</b>	<b>\$1,432,722.00</b>				<b>\$1,432,722.00</b>
<b>TOTAL ACTUAL EXPENDITURES &amp; OTHER FINANCING USES</b>	<b>\$1,432,722.00</b>				<b>\$1,432,722.00</b>

LEA : 129545003 North Schuylkill SD

Printed 3/6/2025 1:33:00 PM

Fund	School	School Number	Local Personnel	Local Nonpersonnel	State Personnel	State Nonpersonnel	Federal Personnel	Federal Nonpersonnel	Total	Explanation
10										
	North Schuylkill Elem Sch	7950	4,246,049.16	983,368.21	6,530,725.37	1,277,248.37	1,438,722.60	65,120.72	14,541,234.43	
	North Schuylkill JSHS	3883	4,369,677.98	1,350,699.18	6,720,875.27	1,754,356.41	608,237.00	55,802.70	14,859,648.54	
Total			8,615,727.14	2,334,067.39	13,251,600.64	3,031,604.78	2,046,959.60	120,923.42	29,400,882.97	